



Catalogue no. 91-002-XIE

# Quarterly Demographic Estimates



October to December 2006,  
Preliminary



Statistics  
Canada

Statistique  
Canada

Canada

## **How to obtain more information**

Specific inquiries about this product and related statistics or services should be directed to: Demography Division, Statistics Canada, Ottawa, Ontario, K1A 0T6 (telephone: 1-800-263-1136).

For information on the wide range of data available from Statistics Canada, you can contact us by calling one of our toll free numbers. You can also contact us by e-mail or by visiting our website at [www.statcan.ca](http://www.statcan.ca).

National inquiries line **1-800-263-1136**

National telecommunications device for the hearing impaired **1-800-363-7629**

Depository Services Program inquiries **1-800-700-1033**

Fax line for Depository Services Program **1-800-889-9734**

E-mail inquiries [\*\*infostats@statcan.ca\*\*](mailto:infostats@statcan.ca)

Website [\*\*www.statcan.ca\*\*](http://www.statcan.ca)

## **Information to access the product**

This product, catalogue no. 91-002-XIE, is available for free in electronic format. To obtain a single issue, visit our website at [www.statcan.ca](http://www.statcan.ca) and select Publications.

## **Standards of service to the public**

Statistics Canada is committed to serving its clients in a prompt, reliable, courteous, and fair manner. To this end, the Agency has developed standards of service that its employees observe in serving its clients. To obtain a copy of these service standards, please contact Statistics Canada toll free at 1-800-263-1136. The service standards are also published on [www.statcan.ca](http://www.statcan.ca) under About us > Providing services to Canadians.



Statistics Canada  
Demography Division

# Quarterly Demographic Estimates

October to December 2006,  
Preliminary

Published by authority of the Minister responsible for Statistics Canada

© Minister of Industry, 2007

All rights reserved. The content of this electronic publication may be reproduced, in whole or in part, and by any means, without further permission from Statistics Canada, subject to the following conditions: that it be done solely for the purposes of private study, research, criticism, review or newspaper summary, and/or for non-commercial purposes; and that Statistics Canada be fully acknowledged as follows: Source (or "Adapted from", if appropriate): Statistics Canada, year of publication, name of product, catalogue number, volume and issue numbers, reference period and page(s). Otherwise, no part of this publication may be reproduced, stored in a retrieval system or transmitted in any form, by any means—electronic, mechanical or photocopy—or for any purposes without prior written permission of Licensing Services, Client Services Division, Statistics Canada, Ottawa, Ontario, Canada K1A 0T6.

March 2007

Catalogue no. 91-002-XIE, Vol. 20, No. 4

ISSN 1911-0928

Frequency: Quarterly

Ottawa

La version française de cette publication est disponible sur demande (n° 91-002-XIF au catalogue).

---

#### **Note of appreciation**

*Canada owes the success of its statistical system to a long standing partnership between Statistics Canada, the citizens of Canada, its businesses, governments and other institutions. Accurate and timely statistical information could not be produced without their continued cooperation and goodwill.*

# User information

---

## Symbols

The following standard symbols are used in Statistics Canada publications:

- . not available for any reference period
- .. not available for a specific reference period
- ... not applicable
- 0 true zero or a value rounded to zero
- 0<sup>s</sup> value rounded to 0 (zero) where there is a meaningful distinction between true zero and the value that was rounded
- p preliminary
- r revised
- x suppressed to meet the confidentiality requirements of the *Statistics Act*
- E use with caution
- F too unreliable to be published

# Notice to readers

---

Most of the components used to produce preliminary population estimates are estimated using demographic models or based on data sources less complete or reliable, albeit more timely, than those used for updated or final estimates.

# Table of contents

---

<b>Highlights</b>	<b>7</b>
<b>Analysis</b>	<b>8</b>
A steady influx of immigrants, distributed a bit more evenly across the country	8
Alberta has lower net interprovincial migration ...	8
... but still posts the fastest population growth in Canada	9
<b>Related products</b>	<b>11</b>
<b>Statistical tables</b>	
1 Quarterly population estimates, national perspective	14
1-1 Population	14
1-2 Quarterly variation	16
1-3 Quarterly population growth	18
2 Quarterly population estimates, variations and growth, provincial perspective	20
2-1 Canada	20
2-2 Newfoundland and Labrador	21
2-3 Prince Edward Island	22
2-4 Nova Scotia	23
2-5 New Brunswick	24
2-6 Quebec	25
2-7 Ontario	26
2-8 Manitoba	27
2-9 Saskatchewan	28
2-10 Alberta	29
2-11 British Columbia	30
2-12 Yukon Territory	31
2-13 Northwest Territories	32
2-14 Nunavut	33
3 Quarterly population estimates and factors of growth, provincial perspective	34
3-1 Canada	34
3-2 Newfoundland and Labrador	35
3-3 Prince Edward Island	36
3-4 Nova Scotia	37

**Table of contents – continued**

3-5	New Brunswick	38
3-6	Quebec	39
3-7	Ontario	40
3-8	Manitoba	41
3-9	Saskatchewan	42
3-10	Alberta	43
3-11	British Columbia	44
3-12	Yukon Territory	45
3-13	Northwest Territories	46
3-14	Nunavut	47
4	Quarterly estimates of demographic components, provincial perspective	48
4-1	Canada	48
4-2	Newfoundland and Labrador	49
4-3	Prince Edward Island	50
4-4	Nova Scotia	51
4-5	New Brunswick	52
4-6	Quebec	53
4-7	Ontario	54
4-8	Manitoba	55
4-9	Saskatchewan	56
4-10	Alberta	57
4-11	British Columbia	58
4-12	Yukon Territory	59
4-13	Northwest Territories	60
4-14	Nunavut	61
5	Quarterly estimates of demographic components, national perspective	62
5-1	Births	62
5-2	Deaths	64
5-3	Immigrants	66
5-4	Emigrants	68
5-5	Returning emigrants	70
5-6	Net temporary emigrants	72
5-7	Net non-permanent residents	74
5-8	Interprovincial in-migrants	76
5-9	Interprovincial out-migrants	78
5-10	Total growth	80
5-11	Natural increase	82
5-12	Net interprovincial migration	84

## Table of contents – continued

5-13	Net international migration	86
5-14	Total net migration	88
6	Quarterly estimates of interprovincial migrants by province or territory of origin and destination, Canada, October to December 2006	90

## Data quality, concepts and methodology

	Quality of estimates	91
	Explanatory notes for the tables	96

## Appendix

I	Glossary	98
II	Source and remarks	101

## Charts

1.	Immigration rates, Canada, provinces and territories, October to December, 2005 and 2006	8
2.	Alberta net interprovincial migration by jurisdiction, October to December, 2005 and 2006	9
3.	Quarterly variation of population estimates, Canada, provinces and territories, October to December, 2005 and 2006	10



## Highlights

---

- On January 1, 2007, the population of Canada was estimated at 32,777,300, an increase of 47,100 from October 1, 2006. The rate of population growth in the fourth quarter of 2006 (0.14%) was slightly higher than the rate observed in the same quarter of 2005 (0.13%).
- Immigration remains high. In the last three months of 2006, Canada welcomed 58,300 immigrants, the largest fourth-quarter total since 1992 (64,900).
- Every province except Ontario and British Columbia received more immigrants in the fourth quarter of 2006 than in the same period in 2005. Ontario remains immigrants' preferred destination, but the proportion of them who settle there is decreasing.
- The last three months of 2006 were marked by a decline in Alberta's net interprovincial migration. The downturn is largely attributable to an important increase in the number of people leaving the province for other parts of the country. Many of these movements can be associated with returns to home regions.
- For the first time since 1997, Saskatchewan's population increased in the fourth quarter (0.14%), posting its highest growth rate since 1983 (0.24%). The last time the province's population growth outpaced the national average was in the third quarter of 1984.

## Analysis

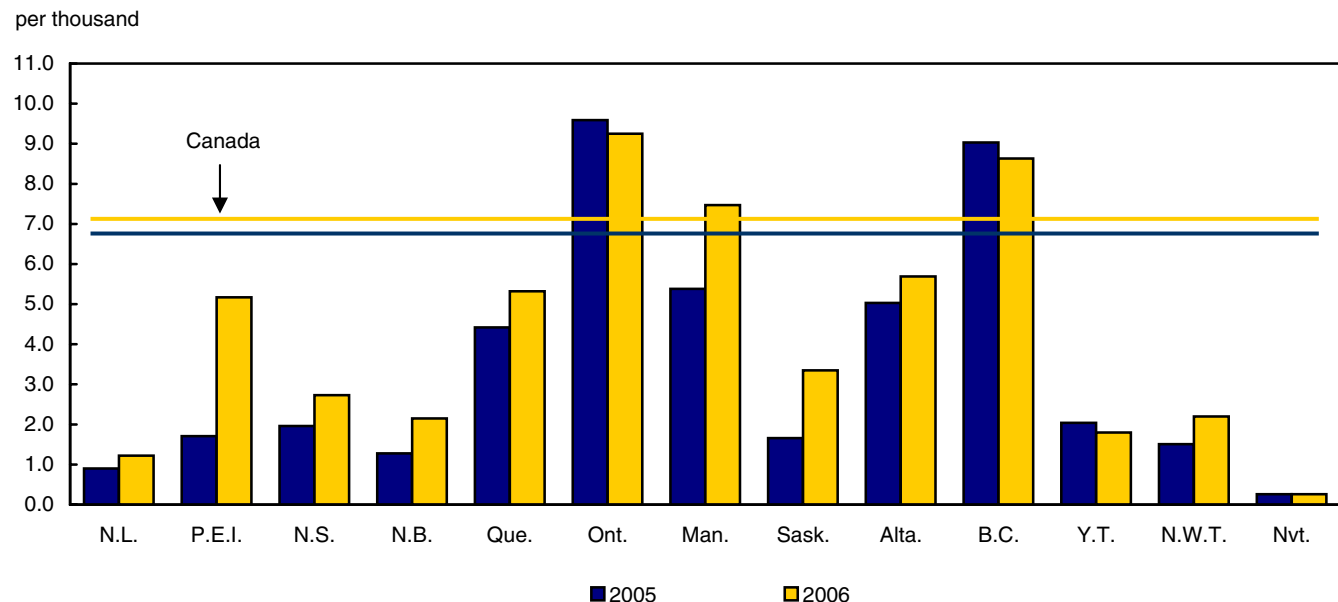
On January 1, 2007, the population of Canada was estimated at 32,777,300, an increase of 47,100 from October 1, 2006. The rate of population growth in the fourth quarter of 2006 (0.14%) is slightly higher than the rate observed in the same quarter of 2005 (0.13%).

### A steady influx of immigrants, distributed a bit more evenly across the country

Immigration remains high. In the last three months of 2006, Canada welcomed 58,300 immigrants, the largest fourth-quarter total since 1992 (64,900).

Chart 1

Immigration rates, Canada, provinces and territories, October to December, 2005 and 2006



While Ontario remains immigrants' preferred destination, the proportion of those who settle there is shrinking. In the last three months of 2006, the province accounted for 50.5% of national immigration. The last time Ontario had such a small fourth-quarter percentage was in 1993.

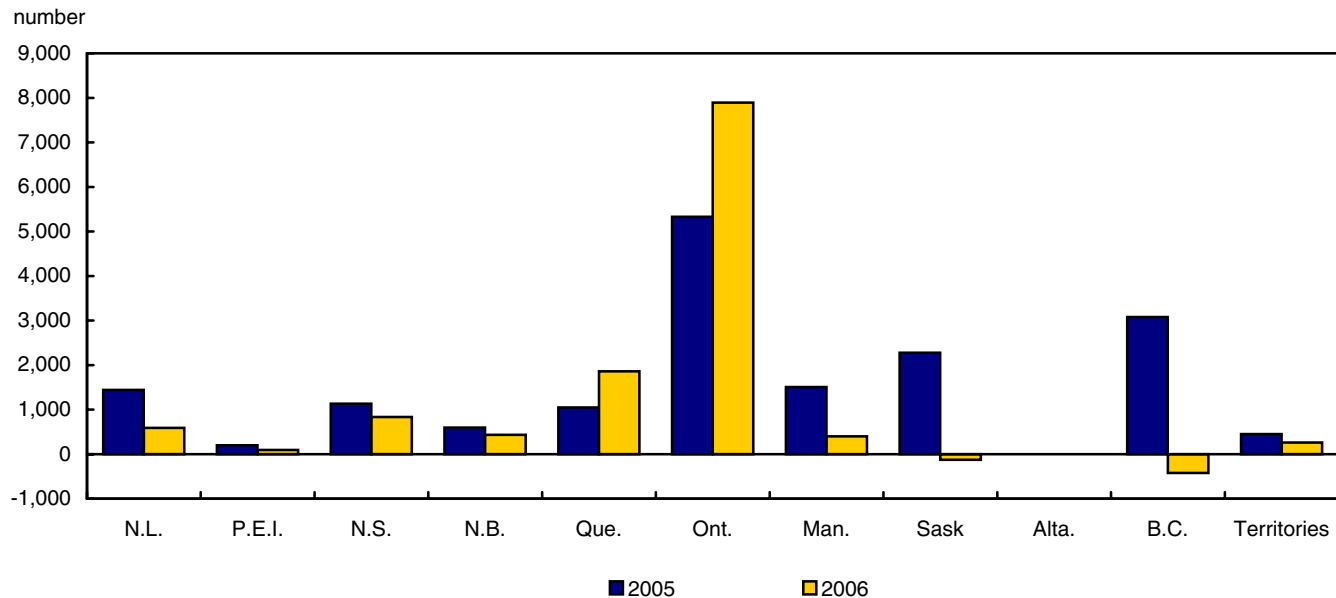
Every province except Ontario and British Columbia received more immigrants in the fourth quarter of 2006 than in the same period of 2005. In particular, Prince Edward Island had a record number of immigrants in the final quarter, and Nova Scotia, Manitoba and Saskatchewan posted their highest levels of immigration since the 1970s.

### Alberta has lower net interprovincial migration ...

Aside from the increase in immigration, the last three months of 2006 were marked by a decline in Alberta's net interprovincial migration. The downturn is largely attributable to an important increase in the number of people leaving the province for other parts of the country. Many of these movements can be associated with returns to home regions.

The increase in outflows from Alberta inevitably affects the population statistics of other Canadian jurisdictions. Indeed, nearly every province saw an improvement in its net interprovincial migration in the fourth quarter of 2006 compared with the same period of the previous year.

**Chart 2**  
**Alberta net interprovincial migration by jurisdiction, October to December, 2005 and 2006**



Alberta's neighbours benefited most from the change. For the first time since 1983, Saskatchewan gained more people from Alberta than it lost to that province in a fourth quarter. The last time British Columbia posted such a large net gain in its exchanges with Alberta was in 1995.

Every province except Ontario and Quebec improved its net interprovincial migration with Alberta. The two central Canadian provinces' net losses to Alberta continued to rise, reaching levels not seen since the fourth quarter of 1980.

**... but still posts the fastest population growth in Canada**

Alberta's growth rate for the October-December 2006 period was 0.65%. While this is lower than the rate observed in the final quarter of 2005 (0.75%), it is still four times the national average.

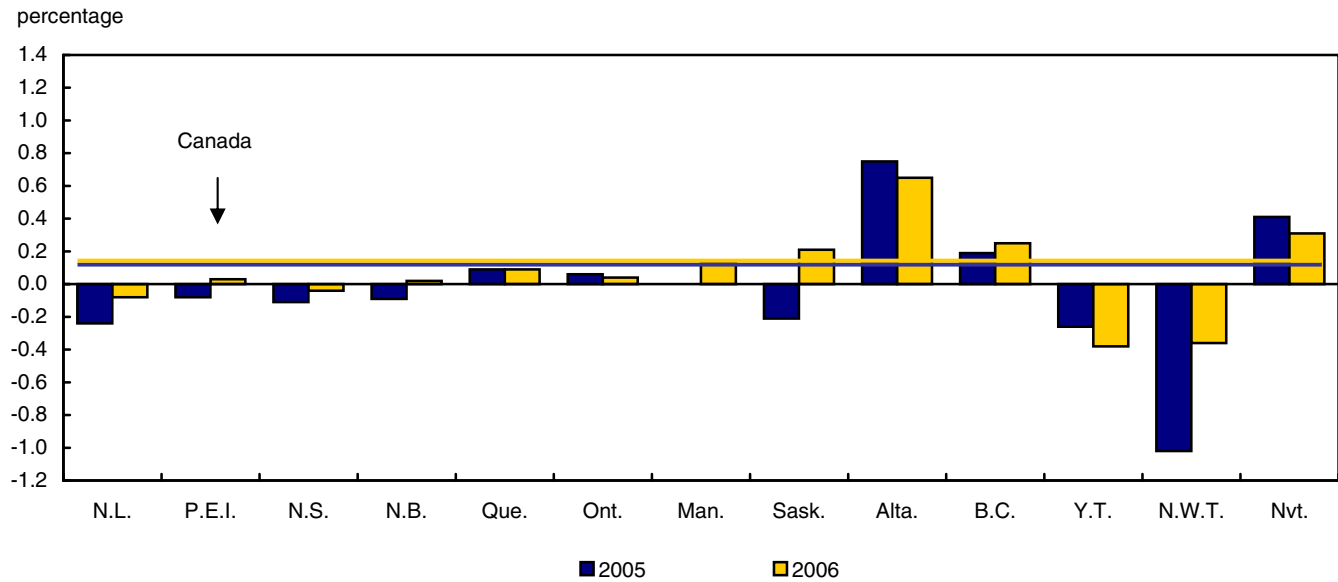
Alberta overcame the decline in its net interprovincial migration by having a higher rate of natural increase than any other province and a steadily climbing rate of international migration. It accounted for nearly 70% of the province's growth in the last three months of 2005, compared with just over 50% a year later.

The other jurisdictions that grew faster than Canada as a whole were Nunavut (0.31%), British Columbia (0.25%) and Saskatchewan (0.21%).

While Nunavut's population growth was double the national average because of its high rate of natural increase, the rapid growth recorded by British Columbia and Saskatchewan was due to net gains in interprovincial migration.

British Columbia posted its second highest growth rate since the final quarter of 1996, as its net interprovincial migration jumped from -900 in last three months of 2005 to +2,700 in the same period of 2006. As a result, interprovincial migration made up more than a quarter of total growth, a proportion seldom seen in British Columbia.

**Chart 3**  
**Quarterly variation of population estimates, Canada, provinces and territories, October to December, 2005 and 2006**



Saskatchewan posted its largest net gain in fourth-quarter interprovincial migration since 1975 (+1,100 compared with +1,400). This increase helped the province to record its highest population growth rate (0.14%) since 1983 (0.24%). This is also its first positive fourth quarter since 1997. The last time Saskatchewan's population growth exceeded the national average was in the third quarter of 1984.

Two provinces suffered population declines in the last quarter of 2006: Newfoundland and Labrador (-0.08%) and Nova Scotia (-0.04%). Both jurisdictions also lost population in the same period of 2005, but the rate of decline slowed because of the decrease in their net migration losses to Alberta.

Proportionally, the largest population losses were incurred by Yukon Territory (-0.38%) and the Northwest Territories (-0.36%). While the Northwest Territories lost fewer people thanks to an improvement in its net interprovincial migration, the opposite was true for Yukon Territory. The latter was the only jurisdiction that had a higher rate of decline than in the same period of 2005.

Ontario's population continues to increase, but in 2006, it posted its smallest fourth-quarter growth rate in over 30 years (0.04%). The low level of growth is due to higher net losses in interprovincial migration exchanges and, to a lesser extent, a decrease in net international migration.

In Quebec, larger net losses in interprovincial migration erased an upswing in natural increase in the fourth quarter. As a result, the population grew at the same rate as in the last quarter of 2005 (0.09%), a rate that remains below the national average.

Manitoba's population is also growing more slowly than the Canadian population, but it expanded faster in the last three months of 2006 than in the same period of the previous year. The change is attributable to an increase in the number of immigrants and smaller net losses in interprovincial migration.

The same applies to Prince Edward Island and New Brunswick, which posted a population gain in the fourth quarter of 2006 after posting a loss in the same period of 2005. Once again, the improvement is due to increases in net interprovincial and international migration.

## Related products

---

### Selected publications from Statistics Canada

---

91-209-X	Report on the Demographic Situation in Canada
91-213-X	Annual Demographic Statistics
91-214-X	Annual Demographic Estimates: Census Metropolitan Areas, Economic Regions and Census Divisions, Age and Sex
91-215-X	Annual Demographic Estimates: Canada, Provinces and Territories
91-520-X	Population Projections for Canada, Provinces and Territories

---

### Selected CANSIM tables from Statistics Canada

---

051-0001	Estimates of population, by age group and sex, Canada, provinces and territories, annual
051-0002	Deaths, by sex and age group, Canada, provinces and territories, annual
051-0004	Components of population growth, Canada, provinces and territories, annual
051-0005	Estimates of population, Canada, provinces and territories, quarterly
051-0006	Immigrants to Canada, by country of last permanent residence, quarterly
051-0010	Estimates of population, by marital status, age group and sex, Canada, provinces and territories, annual
051-0011	International migrants, by age group and sex, Canada, provinces, and territories, annual
051-0012	Interprovincial migrants, by age group and sex, Canada, provinces and territories, annual
051-0013	Births by sex, Canada, provinces and territories, annual
051-0017	Interprovincial migrants, Canada, provinces and territories, quarterly
051-0018	Interprovincial in-, out- and net-migrants, by province or territory, annual
051-0019	Interprovincial migrants, by province or territory of origin and destination, annual
051-0020	Number of non-permanent residents, Canada, provinces and territories, quarterly
051-0035	Components of population growth, census divisions and census metropolitan areas, 2001 Census boundaries, annual
051-0037	International migration components, Canada, provinces and territories, quarterly

051-0045	Interprovincial migrants, by province or territory of origin and destination, quarterly
053-0001	Vital statistics, births, deaths and marriages, quarterly
102-0502	Deaths, by month, Canada, provinces and territories, annual
102-0503	Deaths, by age and sex, Canada, provinces and territories, annual
102-0504	Deaths, by age group and sex, Canada, provinces and territories, annual
102-0505	Deaths, by marital status, age group and sex, Canada, provinces and territories, annual
102-4502	Live births, by month, Canada, provinces and territories, annual
102-4503	Live births, by age of mother, Canada, provinces and territories, annual
102-4504	Live births, mean age of mother, Canada, provinces and territories, annual

---

### **Selected surveys from Statistics Canada**

---

3231	Vital Statistics - Birth Database
3233	Vital Statistics - Death Database
3601	Estimates of Total Population, Canada, Provinces and Territories
3604	Estimates of Population by Age and Sex for Canada, Provinces and Territories
3605	Estimates of Population by Marital Status, Age and Sex for Canada, Provinces and Territories

---

### **Selected summary tables from Statistics Canada**

---

- *Births and birth rate, by provinces and territories*
- *Deaths and death rate, by provinces and territories*
- *Components of population growth, by province and territory*
- *Marriages by provinces and territories*
- *Population by marital status and sex*
- *Population by marital status and sex, by province and territory*

# Statistical tables

---

---

**Table 1-1**  
**Quarterly population estimates, national perspective — Population 1**

	Canada	Newfoundland and Labrador	Prince Edward Island	Nova Scotia	New Brunswick	Quebec	Ontario
	number						
<b>2007</b>							
January 1 <sup>st</sup>	32,777,304	508,548	138,632	933,793	748,582	7,676,097	12,726,336
<b>2006</b>							
October 1 <sup>st</sup>	32,730,213	508,955	138,596	934,172	748,439	7,669,100	12,721,776
July 1 <sup>st</sup>	32,623,490	509,677	138,519	934,405	749,168	7,651,531	12,686,952
April 1 <sup>st</sup>	32,523,898	510,431	138,306	934,281	749,920	7,635,319	12,643,698
January 1 <sup>st</sup>	32,448,358	512,308	138,165	935,347	750,558	7,622,887	12,614,181
<b>2005</b>							
October 1 <sup>st</sup>	32,406,497	513,539	138,281	936,366	751,218	7,616,248	12,606,305
July 1 <sup>st</sup>	32,299,496	513,962	138,176	936,130	751,481	7,597,768	12,558,669
April 1 <sup>st</sup>	32,197,574	514,956	137,914	936,602	752,017	7,582,204	12,508,380
January 1 <sup>st</sup>	32,128,983	516,382	137,838	937,782	752,036	7,574,048	12,475,400
<b>2004</b>							
October 1 <sup>st</sup>	32,089,225	516,483	137,822	938,648	752,191	7,566,694	12,465,403
July 1 <sup>st</sup>	31,989,454	517,209	137,876	937,993	752,080	7,548,589	12,416,749
April 1 <sup>st</sup>	31,891,358	517,807	137,828	937,212	751,854	7,531,909	12,365,076
January 1 <sup>st</sup>	31,818,378	518,656	137,651	937,484	751,419	7,521,126	12,327,133
<b>2003</b>							
October 1 <sup>st</sup>	31,773,080	518,754	137,537	937,429	751,469	7,513,230	12,311,012
July 1 <sup>st</sup>	31,676,077	518,428	137,325	936,513	751,222	7,494,690	12,262,560
April 1 <sup>st</sup>	31,577,688	518,622	137,152	935,601	751,014	7,478,748	12,210,254
January 1 <sup>st</sup>	31,505,085	519,032	137,088	935,404	750,937	7,467,705	12,170,542
<b>2002</b>							
October 1 <sup>st</sup>	31,471,094	519,382	137,067	935,571	750,976	7,461,823	12,156,386
July 1 <sup>st</sup>	31,372,587	519,449	136,934	934,507	750,327	7,445,745	12,102,045
April 1 <sup>st</sup>	31,265,843	519,790	136,835	933,720	749,618	7,432,197	12,036,968
January 1 <sup>st</sup>	31,182,448	521,229	136,847	933,609	749,286	7,421,309	11,986,887
<b>2001</b>							
October 1 <sup>st</sup>	31,135,823	521,455	136,872	933,245	749,716	7,413,392	11,965,417
July 1 <sup>st</sup>	31,021,251	521,986	136,672	932,389	749,890	7,396,990	11,897,647

See footnotes at the end of the table.



Table 1-1 – continued

## Quarterly population estimates, national perspective — Population 1

	Manitoba	Saskatchewan	Alberta	British Columbia	Yukon Territory	Northwest Territories	Nunavut
	number						
<b>2007</b>							
January 1 <sup>st</sup>	1,180,004	987,939	3,435,511	4,338,106	31,032	41,777	30,947
<b>2006</b>							
October 1 <sup>st</sup>	1,178,491	985,859	3,413,464	4,327,431	31,151	41,929	30,850
July 1 <sup>st</sup>	1,177,765	985,386	3,375,763	4,310,452	31,229	41,861	30,782
April 1 <sup>st</sup>	1,175,948	985,036	3,352,235	4,295,191	31,198	41,845	30,490
January 1 <sup>st</sup>	1,174,653	986,786	3,326,699	4,283,011	31,277	42,177	30,309
<b>2005</b>							
October 1 <sup>st</sup>	1,174,595	988,837	3,301,987	4,274,967	31,358	42,610	30,186
July 1 <sup>st</sup>	1,174,148	989,957	3,277,582	4,257,833	31,121	42,629	30,040
April 1 <sup>st</sup>	1,174,038	991,824	3,254,698	4,241,223	31,026	42,800	29,892
January 1 <sup>st</sup>	1,173,307	992,940	3,237,049	4,228,724	30,947	42,787	29,743
<b>2004</b>							
October 1 <sup>st</sup>	1,172,512	994,628	3,223,393	4,218,133	30,869	42,799	29,650
July 1 <sup>st</sup>	1,170,475	994,888	3,206,953	4,203,315	30,896	42,798	29,633
April 1 <sup>st</sup>	1,167,937	994,903	3,194,433	4,189,394	30,885	42,740	29,380
January 1 <sup>st</sup>	1,165,524	994,543	3,182,680	4,179,270	30,846	42,718	29,328
<b>2003</b>							
October 1 <sup>st</sup>	1,163,571	994,736	3,173,723	4,169,170	30,800	42,449	29,200
July 1 <sup>st</sup>	1,161,896	994,732	3,161,371	4,155,370	30,574	42,231	29,165
April 1 <sup>st</sup>	1,159,432	994,667	3,148,466	4,142,216	30,455	41,988	29,073
January 1 <sup>st</sup>	1,158,042	994,856	3,137,751	4,132,665	30,334	41,802	28,927
<b>2002</b>							
October 1 <sup>st</sup>	1,157,140	995,358	3,129,563	4,127,013	30,267	41,681	28,867
July 1 <sup>st</sup>	1,155,584	995,886	3,116,332	4,115,413	30,137	41,489	28,739
April 1 <sup>st</sup>	1,153,533	996,916	3,100,798	4,105,904	30,092	41,239	28,233
January 1 <sup>st</sup>	1,152,079	998,219	3,087,024	4,096,473	30,155	41,107	28,224
<b>2001</b>							
October 1 <sup>st</sup>	1,151,644	998,926	3,075,186	4,090,659	30,032	41,144	28,135
July 1 <sup>st</sup>	1,151,285	1,000,134	3,056,739	4,078,447	30,129	40,822	28,121

1. Population estimates are final postcensal from July 1, 2001 to July 1, 2003, updated postcensal from October 1, 2003 to April 1, 2006 and preliminary postcensal from July 1, 2006.

**Table 1-2**  
**Quarterly population estimates, national perspective — Quarterly variation <sup>1</sup>**

	Canada	Newfoundland and Labrador	Prince Edward Island	Nova Scotia	New Brunswick	Quebec	Ontario
	variation in percentage						
<b>2006</b>							
October - December	0.14	-0.08	0.03	-0.04	0.02	0.09	0.04
July - September	0.33	-0.14	0.06	-0.02	-0.10	0.23	0.27
April - June	0.31	-0.15	0.15	0.01	-0.10	0.21	0.34
January - March	0.23	-0.37	0.10	-0.11	-0.09	0.16	0.23
<b>2005</b>							
October - December	0.13	-0.24	-0.08	-0.11	-0.09	0.09	0.06
July - September	0.33	-0.08	0.08	0.03	-0.03	0.24	0.38
April - June	0.32	-0.19	0.19	-0.05	-0.07	0.21	0.40
January - March	0.21	-0.28	0.06	-0.13	0.00	0.11	0.26
<b>2004</b>							
October - December	0.12	-0.02	0.01	-0.09	-0.02	0.10	0.08
July - September	0.31	-0.14	-0.04	0.07	0.01	0.24	0.39
April - June	0.31	-0.12	0.03	0.08	0.03	0.22	0.42
January - March	0.23	-0.16	0.13	-0.03	0.06	0.14	0.31
<b>2003</b>							
October - December	0.14	-0.02	0.08	0.01	-0.01	0.11	0.13
July - September	0.31	0.06	0.15	0.10	0.03	0.25	0.40
April - June	0.31	-0.04	0.13	0.10	0.03	0.21	0.43
January - March	0.23	-0.08	0.05	0.02	0.01	0.15	0.33
<b>2002</b>							
October - December	0.11	-0.07	0.02	-0.02	-0.01	0.08	0.12
July - September	0.31	-0.01	0.10	0.11	0.09	0.22	0.45
April - June	0.34	-0.07	0.07	0.08	0.09	0.18	0.54
January - March	0.27	-0.28	-0.01	0.01	0.04	0.15	0.42
<b>2001</b>							
October - December	0.15	-0.04	-0.02	0.04	-0.06	0.11	0.18
July - September	0.37	-0.10	0.15	0.09	-0.02	0.22	0.57

See footnotes at the end of the table.

Table 1-2 – continued

 Quarterly population estimates, national perspective — Quarterly variation <sup>1</sup>

	Manitoba	Saskatchewan	Alberta	British Columbia	Yukon Territory	Northwest Territories	Nunavut
	variation in percentage						
<b>2006</b>							
October - December	0.13	0.21	0.65	0.25	-0.38	-0.36	0.31
July - September	0.06	0.05	1.12	0.39	-0.25	0.16	0.22
April - June	0.15	0.04	0.70	0.36	0.10	0.04	0.96
January - March	0.11	-0.18	0.77	0.28	-0.25	-0.79	0.60
<b>2005</b>							
October - December	0.00	-0.21	0.75	0.19	-0.26	-1.02	0.41
July - September	0.04	-0.11	0.74	0.40	0.76	-0.04	0.49
April - June	0.01	-0.19	0.70	0.39	0.31	-0.40	0.50
January - March	0.06	-0.11	0.55	0.30	0.26	0.03	0.50
<b>2004</b>							
October - December	0.07	-0.17	0.42	0.25	0.25	-0.03	0.31
July - September	0.17	-0.03	0.51	0.35	-0.09	0.00	0.06
April - June	0.22	0.00	0.39	0.33	0.04	0.14	0.86
January - March	0.21	0.04	0.37	0.24	0.13	0.05	0.18
<b>2003</b>							
October - December	0.17	-0.02	0.28	0.24	0.15	0.63	0.44
July - September	0.14	0.00	0.39	0.33	0.74	0.52	0.12
April - June	0.21	0.01	0.41	0.32	0.39	0.58	0.32
January - March	0.12	-0.02	0.34	0.23	0.40	0.44	0.50
<b>2002</b>							
October - December	0.08	-0.05	0.26	0.14	0.22	0.29	0.21
July - September	0.13	-0.05	0.42	0.28	0.43	0.46	0.45
April - June	0.18	-0.10	0.50	0.23	0.15	0.61	1.79
January - March	0.13	-0.13	0.45	0.23	-0.21	0.32	0.03
<b>2001</b>							
October - December	0.04	-0.07	0.38	0.14	0.41	-0.09	0.32
July - September	0.03	-0.12	0.60	0.30	-0.32	0.79	0.05

1. Numbers for total growth are final up to June 2003, updated from July 2003 to March 2006 and preliminary from April 2006.

**Table 1-3**  
**Quarterly population estimates, national perspective — Quarterly population growth <sup>1</sup>**

	Canada	Newfoundland and Labrador	Prince Edward Island	Nova Scotia	New Brunswick	Quebec	Ontario
	number						
<b>2006</b>							
October - December	47,091	-407	36	-379	143	6,997	4,560
July - September	106,723	-722	77	-233	-729	17,569	34,824
April - June	99,592	-754	213	124	-752	16,212	43,254
January - March	75,540	-1,877	141	-1,066	-638	12,432	29,517
<b>2005</b>							
October - December	41,861	-1,231	-116	-1,019	-660	6,639	7,876
July - September	107,001	-423	105	236	-263	18,480	47,636
April - June	101,922	-994	262	-472	-536	15,564	50,289
January - March	68,591	-1,426	76	-1,180	-19	8,156	32,980
<b>2004</b>							
October - December	39,758	-101	16	-866	-155	7,354	9,997
July - September	99,771	-726	-54	655	111	18,105	48,654
April - June	98,096	-598	48	781	226	16,680	51,673
January - March	72,980	-849	177	-272	435	10,783	37,943
<b>2003</b>							
October - December	45,298	-98	114	55	-50	7,896	16,121
July - September	97,003	326	212	916	247	18,540	48,452
April - June	98,389	-194	173	912	208	15,942	52,306
January - March	72,603	-410	64	197	77	11,043	39,712
<b>2002</b>							
October - December	33,991	-350	21	-167	-39	5,882	14,156
July - September	98,507	-67	133	1,064	649	16,078	54,341
April - June	106,744	-341	99	787	709	13,548	65,077
January - March	83,395	-1,439	-12	111	332	10,888	50,081
<b>2001</b>							
October - December	46,625	-226	-25	364	-430	7,917	21,470
July - September	114,572	-531	200	856	-174	16,402	67,770

See footnotes at the end of the table.

Table 1-3 – continued

 Quarterly population estimates, national perspective — Quarterly population growth <sup>1</sup>

	Manitoba	Saskatchewan	Alberta	British Columbia	Yukon Territory	Northwest Territories	Nunavut
	number						
<b>2006</b>							
October - December	1,513	2,080	22,047	10,675	-119	-152	97
July - September	726	473	37,701	16,979	-78	68	68
April - June	1,817	350	23,528	15,261	31	16	292
January - March	1,295	-1,750	25,536	12,180	-79	-332	181
<b>2005</b>							
October - December	58	-2,051	24,712	8,044	-81	-433	123
July - September	447	-1,120	24,405	17,134	237	-19	146
April - June	110	-1,867	22,884	16,610	95	-171	148
January - March	731	-1,116	17,649	12,499	79	13	149
<b>2004</b>							
October - December	795	-1,688	13,656	10,591	78	-12	93
July - September	2,037	-260	16,440	14,818	-27	1	17
April - June	2,538	-15	12,520	13,921	11	58	253
January - March	2,413	360	11,753	10,124	39	22	52
<b>2003</b>							
October - December	1,953	-193	8,957	10,100	46	269	128
July - September	1,675	4	12,352	13,800	226	218	35
April - June	2,464	65	12,905	13,154	119	243	92
January - March	1,390	-189	10,715	9,551	121	186	146
<b>2002</b>							
October - December	902	-502	8,188	5,652	67	121	60
July - September	1,556	-528	13,231	11,600	130	192	128
April - June	2,051	-1,030	15,534	9,509	45	250	506
January - March	1,454	-1,303	13,774	9,431	-63	132	9
<b>2001</b>							
October - December	435	-707	11,838	5,814	123	-37	89
July - September	359	-1,208	18,447	12,212	-97	322	14

1. Numbers for total growth are final up to June 2003, updated from July 2003 to March 2006 and preliminary from April 2006.

**Table 2-1**  
**Quarterly population estimates, variations and growth, provincial perspective — Canada <sup>1</sup>**

	Population		Quarterly	Quarterly population growth
	number	variation in percentage		number
<b>2007</b>				
January 1 <sup>st</sup>	32,777,304		0.14	47,091
<b>2006</b>				
October 1 <sup>st</sup>	32,730,213		0.33	106,723
July 1 <sup>st</sup>	32,623,490		0.31	99,592
April 1 <sup>st</sup>	32,523,898		0.23	75,540
January 1 <sup>st</sup>	32,448,358		0.13	41,861
<b>2005</b>				
October 1 <sup>st</sup>	32,406,497		0.33	107,001
July 1 <sup>st</sup>	32,299,496		0.32	101,922
April 1 <sup>st</sup>	32,197,574		0.21	68,591
January 1 <sup>st</sup>	32,128,983		0.12	39,758
<b>2004</b>				
October 1 <sup>st</sup>	32,089,225		0.31	99,771
July 1 <sup>st</sup>	31,989,454		0.31	98,096
April 1 <sup>st</sup>	31,891,358		0.23	72,980
January 1 <sup>st</sup>	31,818,378		0.14	45,298
<b>2003</b>				
October 1 <sup>st</sup>	31,773,080		0.31	97,003
July 1 <sup>st</sup>	31,676,077		0.31	98,389
April 1 <sup>st</sup>	31,577,688		0.23	72,603
January 1 <sup>st</sup>	31,505,085		0.11	33,991
<b>2002</b>				
October 1 <sup>st</sup>	31,471,094		0.31	98,507
July 1 <sup>st</sup>	31,372,587		0.34	106,744
April 1 <sup>st</sup>	31,265,843		0.27	83,395
January 1 <sup>st</sup>	31,182,448		0.15	46,625
<b>2001</b>				
October 1 <sup>st</sup>	31,135,823		0.37	114,572
July 1 <sup>st</sup>	31,021,251		0.35	108,594

1. Population estimates are final postcensal from July 1, 2001 to July 1, 2003, updated postcensal from October 1, 2003 to April 1, 2006 and preliminary postcensal from July 1, 2006.

**Table 2-2**  
**Quarterly population estimates, variations and growth, provincial perspective — Newfoundland and Labrador<sup>1</sup>**

	Population		Quarterly	Quarterly population growth
	number	variation in percentage		number
<b>2007</b>				
January 1 <sup>st</sup>	508,548		-0.08	-407
<b>2006</b>				
October 1 <sup>st</sup>	508,955		-0.14	-722
July 1 <sup>st</sup>	509,677		-0.15	-754
April 1 <sup>st</sup>	510,431		-0.37	-1,877
January 1 <sup>st</sup>	512,308		-0.24	-1,231
<b>2005</b>				
October 1 <sup>st</sup>	513,539		-0.08	-423
July 1 <sup>st</sup>	513,962		-0.19	-994
April 1 <sup>st</sup>	514,956		-0.28	-1,426
January 1 <sup>st</sup>	516,382		-0.02	-101
<b>2004</b>				
October 1 <sup>st</sup>	516,483		-0.14	-726
July 1 <sup>st</sup>	517,209		-0.12	-598
April 1 <sup>st</sup>	517,807		-0.16	-849
January 1 <sup>st</sup>	518,656		-0.02	-98
<b>2003</b>				
October 1 <sup>st</sup>	518,754		0.06	326
July 1 <sup>st</sup>	518,428		-0.04	-194
April 1 <sup>st</sup>	518,622		-0.08	-410
January 1 <sup>st</sup>	519,032		-0.07	-350
<b>2002</b>				
October 1 <sup>st</sup>	519,382		-0.01	-67
July 1 <sup>st</sup>	519,449		-0.07	-341
April 1 <sup>st</sup>	519,790		-0.28	-1,439
January 1 <sup>st</sup>	521,229		-0.04	-226
<b>2001</b>				
October 1 <sup>st</sup>	521,455		-0.10	-531
July 1 <sup>st</sup>	521,986		-0.26	-1,335

1. Population estimates are final postcensal from July 1, 2001 to July 1, 2003, updated postcensal from October 1, 2003 to April 1, 2006 and preliminary postcensal from July 1, 2006.

**Table 2-3**  
**Quarterly population estimates, variations and growth, provincial perspective — Prince Edward Island <sup>1</sup>**

	Population		Quarterly	Quarterly population growth
	number	variation in percentage		number
<b>2007</b>				
January 1 <sup>st</sup>	138,632		0.03	36
<b>2006</b>				
October 1 <sup>st</sup>	138,596		0.06	77
July 1 <sup>st</sup>	138,519		0.15	213
April 1 <sup>st</sup>	138,306		0.10	141
January 1 <sup>st</sup>	138,165		-0.08	-116
<b>2005</b>				
October 1 <sup>st</sup>	138,281		0.08	105
July 1 <sup>st</sup>	138,176		0.19	262
April 1 <sup>st</sup>	137,914		0.06	76
January 1 <sup>st</sup>	137,838		0.01	16
<b>2004</b>				
October 1 <sup>st</sup>	137,822		-0.04	-54
July 1 <sup>st</sup>	137,876		0.03	48
April 1 <sup>st</sup>	137,828		0.13	177
January 1 <sup>st</sup>	137,651		0.08	114
<b>2003</b>				
October 1 <sup>st</sup>	137,537		0.15	212
July 1 <sup>st</sup>	137,325		0.13	173
April 1 <sup>st</sup>	137,152		0.05	64
January 1 <sup>st</sup>	137,088		0.02	21
<b>2002</b>				
October 1 <sup>st</sup>	137,067		0.10	133
July 1 <sup>st</sup>	136,934		0.07	99
April 1 <sup>st</sup>	136,835		-0.01	-12
January 1 <sup>st</sup>	136,847		-0.02	-25
<b>2001</b>				
October 1 <sup>st</sup>	136,872		0.15	200
July 1 <sup>st</sup>	136,672		0.12	160

1. Population estimates are final postcensal from July 1, 2001 to July 1, 2003, updated postcensal from October 1, 2003 to April 1, 2006 and preliminary postcensal from July 1, 2006.



**Table 2-4**  
**Quarterly population estimates, variations and growth, provincial perspective — Nova Scotia <sup>1</sup>**

	Population		Quarterly	Quarterly population growth
	number	variation in percentage		number
<b>2007</b>				
January 1 <sup>st</sup>	933,793		-0.04	-379
<b>2006</b>				
October 1 <sup>st</sup>	934,172		-0.02	-233
July 1 <sup>st</sup>	934,405		0.01	124
April 1 <sup>st</sup>	934,281		-0.11	-1,066
January 1 <sup>st</sup>	935,347		-0.11	-1,019
<b>2005</b>				
October 1 <sup>st</sup>	936,366		0.03	236
July 1 <sup>st</sup>	936,130		-0.05	-472
April 1 <sup>st</sup>	936,602		-0.13	-1,180
January 1 <sup>st</sup>	937,782		-0.09	-866
<b>2004</b>				
October 1 <sup>st</sup>	938,648		0.07	655
July 1 <sup>st</sup>	937,993		0.08	781
April 1 <sup>st</sup>	937,212		-0.03	-272
January 1 <sup>st</sup>	937,484		0.01	55
<b>2003</b>				
October 1 <sup>st</sup>	937,429		0.10	916
July 1 <sup>st</sup>	936,513		0.10	912
April 1 <sup>st</sup>	935,601		0.02	197
January 1 <sup>st</sup>	935,404		-0.02	-167
<b>2002</b>				
October 1 <sup>st</sup>	935,571		0.11	1,064
July 1 <sup>st</sup>	934,507		0.08	787
April 1 <sup>st</sup>	933,720		0.01	111
January 1 <sup>st</sup>	933,609		0.04	364
<b>2001</b>				
October 1 <sup>st</sup>	933,245		0.09	856
July 1 <sup>st</sup>	932,389		-0.06	-583

1. Population estimates are final postcensal from July 1, 2001 to July 1, 2003, updated postcensal from October 1, 2003 to April 1, 2006 and preliminary postcensal from July 1, 2006.

**Table 2-5**  
**Quarterly population estimates, variations and growth, provincial perspective — New Brunswick <sup>1</sup>**

	Population		Quarterly	Quarterly population growth
	number	variation in percentage		number
<b>2007</b>				
January 1 <sup>st</sup>	748,582		0.02	143
<b>2006</b>				
October 1 <sup>st</sup>	748,439		-0.10	-729
July 1 <sup>st</sup>	749,168		-0.10	-752
April 1 <sup>st</sup>	749,920		-0.09	-638
January 1 <sup>st</sup>	750,558		-0.09	-660
<b>2005</b>				
October 1 <sup>st</sup>	751,218		-0.03	-263
July 1 <sup>st</sup>	751,481		-0.07	-536
April 1 <sup>st</sup>	752,017		0.00	-19
January 1 <sup>st</sup>	752,036		-0.02	-155
<b>2004</b>				
October 1 <sup>st</sup>	752,191		0.01	111
July 1 <sup>st</sup>	752,080		0.03	226
April 1 <sup>st</sup>	751,854		0.06	435
January 1 <sup>st</sup>	751,419		-0.01	-50
<b>2003</b>				
October 1 <sup>st</sup>	751,469		0.03	247
July 1 <sup>st</sup>	751,222		0.03	208
April 1 <sup>st</sup>	751,014		0.01	77
January 1 <sup>st</sup>	750,937		-0.01	-39
<b>2002</b>				
October 1 <sup>st</sup>	750,976		0.09	649
July 1 <sup>st</sup>	750,327		0.09	709
April 1 <sup>st</sup>	749,618		0.04	332
January 1 <sup>st</sup>	749,286		-0.06	-430
<b>2001</b>				
October 1 <sup>st</sup>	749,716		-0.02	-174
July 1 <sup>st</sup>	749,890		0.01	96

1. Population estimates are final postcensal from July 1, 2001 to July 1, 2003, updated postcensal from October 1, 2003 to April 1, 2006 and preliminary postcensal from July 1, 2006.

**Table 2-6**  
**Quarterly population estimates, variations and growth, provincial perspective — Quebec <sup>1</sup>**

	Population		Quarterly	Quarterly population growth
	number	variation in percentage		number
<b>2007</b>				
January 1 <sup>st</sup>	7,676,097		0.09	6,997
<b>2006</b>				
October 1 <sup>st</sup>	7,669,100		0.23	17,569
July 1 <sup>st</sup>	7,651,531		0.21	16,212
April 1 <sup>st</sup>	7,635,319		0.16	12,432
January 1 <sup>st</sup>	7,622,887		0.09	6,639
<b>2005</b>				
October 1 <sup>st</sup>	7,616,248		0.24	18,480
July 1 <sup>st</sup>	7,597,768		0.21	15,564
April 1 <sup>st</sup>	7,582,204		0.11	8,156
January 1 <sup>st</sup>	7,574,048		0.10	7,354
<b>2004</b>				
October 1 <sup>st</sup>	7,566,694		0.24	18,105
July 1 <sup>st</sup>	7,548,589		0.22	16,680
April 1 <sup>st</sup>	7,531,909		0.14	10,783
January 1 <sup>st</sup>	7,521,126		0.11	7,896
<b>2003</b>				
October 1 <sup>st</sup>	7,513,230		0.25	18,540
July 1 <sup>st</sup>	7,494,690		0.21	15,942
April 1 <sup>st</sup>	7,478,748		0.15	11,043
January 1 <sup>st</sup>	7,467,705		0.08	5,882
<b>2002</b>				
October 1 <sup>st</sup>	7,461,823		0.22	16,078
July 1 <sup>st</sup>	7,445,745		0.18	13,548
April 1 <sup>st</sup>	7,432,197		0.15	10,888
January 1 <sup>st</sup>	7,421,309		0.11	7,917
<b>2001</b>				
October 1 <sup>st</sup>	7,413,392		0.22	16,402
July 1 <sup>st</sup>	7,396,990		0.18	13,160

1. Population estimates are final postcensal from July 1, 2001 to July 1, 2003, updated postcensal from October 1, 2003 to April 1, 2006 and preliminary postcensal from July 1, 2006.

**Table 2-7**  
**Quarterly population estimates, variations and growth, provincial perspective — Ontario <sup>1</sup>**

	Population		Quarterly	Quarterly population growth
	number	variation in percentage		number
<b>2007</b>				
January 1 <sup>st</sup>	12,726,336		0.04	4,560
<b>2006</b>				
October 1 <sup>st</sup>	12,721,776		0.27	34,824
July 1 <sup>st</sup>	12,686,952		0.34	43,254
April 1 <sup>st</sup>	12,643,698		0.23	29,517
January 1 <sup>st</sup>	12,614,181		0.06	7,876
<b>2005</b>				
October 1 <sup>st</sup>	12,606,305		0.38	47,636
July 1 <sup>st</sup>	12,558,669		0.40	50,289
April 1 <sup>st</sup>	12,508,380		0.26	32,980
January 1 <sup>st</sup>	12,475,400		0.08	9,997
<b>2004</b>				
October 1 <sup>st</sup>	12,465,403		0.39	48,654
July 1 <sup>st</sup>	12,416,749		0.42	51,673
April 1 <sup>st</sup>	12,365,076		0.31	37,943
January 1 <sup>st</sup>	12,327,133		0.13	16,121
<b>2003</b>				
October 1 <sup>st</sup>	12,311,012		0.40	48,452
July 1 <sup>st</sup>	12,262,560		0.43	52,306
April 1 <sup>st</sup>	12,210,254		0.33	39,712
January 1 <sup>st</sup>	12,170,542		0.12	14,156
<b>2002</b>				
October 1 <sup>st</sup>	12,156,386		0.45	54,341
July 1 <sup>st</sup>	12,102,045		0.54	65,077
April 1 <sup>st</sup>	12,036,968		0.42	50,081
January 1 <sup>st</sup>	11,986,887		0.18	21,470
<b>2001</b>				
October 1 <sup>st</sup>	11,965,417		0.57	67,770
July 1 <sup>st</sup>	11,897,647		0.59	69,310

1. Population estimates are final postcensal from July 1, 2001 to July 1, 2003, updated postcensal from October 1, 2003 to April 1, 2006 and preliminary postcensal from July 1, 2006.

**Table 2-8**  
**Quarterly population estimates, variations and growth, provincial perspective — Manitoba <sup>1</sup>**

	Population		Quarterly	Quarterly population growth
	number	variation in percentage		number
<b>2007</b>				
January 1 <sup>st</sup>	1,180,004		0.13	1,513
<b>2006</b>				
October 1 <sup>st</sup>	1,178,491		0.06	726
July 1 <sup>st</sup>	1,177,765		0.15	1,817
April 1 <sup>st</sup>	1,175,948		0.11	1,295
January 1 <sup>st</sup>	1,174,653		0.00	58
<b>2005</b>				
October 1 <sup>st</sup>	1,174,595		0.04	447
July 1 <sup>st</sup>	1,174,148		0.01	110
April 1 <sup>st</sup>	1,174,038		0.06	731
January 1 <sup>st</sup>	1,173,307		0.07	795
<b>2004</b>				
October 1 <sup>st</sup>	1,172,512		0.17	2,037
July 1 <sup>st</sup>	1,170,475		0.22	2,538
April 1 <sup>st</sup>	1,167,937		0.21	2,413
January 1 <sup>st</sup>	1,165,524		0.17	1,953
<b>2003</b>				
October 1 <sup>st</sup>	1,163,571		0.14	1,675
July 1 <sup>st</sup>	1,161,896		0.21	2,464
April 1 <sup>st</sup>	1,159,432		0.12	1,390
January 1 <sup>st</sup>	1,158,042		0.08	902
<b>2002</b>				
October 1 <sup>st</sup>	1,157,140		0.13	1,556
July 1 <sup>st</sup>	1,155,584		0.18	2,051
April 1 <sup>st</sup>	1,153,533		0.13	1,454
January 1 <sup>st</sup>	1,152,079		0.04	435
<b>2001</b>				
October 1 <sup>st</sup>	1,151,644		0.03	359
July 1 <sup>st</sup>	1,151,285		0.14	1,567

1. Population estimates are final postcensal from July 1, 2001 to July 1, 2003, updated postcensal from October 1, 2003 to April 1, 2006 and preliminary postcensal from July 1, 2006.

**Table 2-9**  
**Quarterly population estimates, variations and growth, provincial perspective — Saskatchewan <sup>1</sup>**

	Population		Quarterly	Quarterly population growth
	number	variation in percentage	number	number
<b>2007</b>				
January 1 <sup>st</sup>	987,939		0.21	2,080
<b>2006</b>				
October 1 <sup>st</sup>	985,859		0.05	473
July 1 <sup>st</sup>	985,386		0.04	350
April 1 <sup>st</sup>	985,036		-0.18	-1,750
January 1 <sup>st</sup>	986,786		-0.21	-2,051
<b>2005</b>				
October 1 <sup>st</sup>	988,837		-0.11	-1,120
July 1 <sup>st</sup>	989,957		-0.19	-1,867
April 1 <sup>st</sup>	991,824		-0.11	-1,116
January 1 <sup>st</sup>	992,940		-0.17	-1,688
<b>2004</b>				
October 1 <sup>st</sup>	994,628		-0.03	-260
July 1 <sup>st</sup>	994,888		0.00	-15
April 1 <sup>st</sup>	994,903		0.04	360
January 1 <sup>st</sup>	994,543		-0.02	-193
<b>2003</b>				
October 1 <sup>st</sup>	994,736		0.00	4
July 1 <sup>st</sup>	994,732		0.01	65
April 1 <sup>st</sup>	994,667		-0.02	-189
January 1 <sup>st</sup>	994,856		-0.05	-502
<b>2002</b>				
October 1 <sup>st</sup>	995,358		-0.05	-528
July 1 <sup>st</sup>	995,886		-0.10	-1,030
April 1 <sup>st</sup>	996,916		-0.13	-1,303
January 1 <sup>st</sup>	998,219		-0.07	-707
<b>2001</b>				
October 1 <sup>st</sup>	998,926		-0.12	-1,208
July 1 <sup>st</sup>	1,000,134		-0.17	-1,696

1. Population estimates are final postcensal from July 1, 2001 to July 1, 2003, updated postcensal from October 1, 2003 to April 1, 2006 and preliminary postcensal from July 1, 2006.

**Table 2-10**  
**Quarterly population estimates, variations and growth, provincial perspective — Alberta <sup>1</sup>**

	Population		Quarterly	Quarterly population growth
	number	variation in percentage		number
<b>2007</b>				
January 1 <sup>st</sup>	3,435,511		0.65	22,047
<b>2006</b>				
October 1 <sup>st</sup>	3,413,464		1.12	37,701
July 1 <sup>st</sup>	3,375,763		0.70	23,528
April 1 <sup>st</sup>	3,352,235		0.77	25,536
January 1 <sup>st</sup>	3,326,699		0.75	24,712
<b>2005</b>				
October 1 <sup>st</sup>	3,301,987		0.74	24,405
July 1 <sup>st</sup>	3,277,582		0.70	22,884
April 1 <sup>st</sup>	3,254,698		0.55	17,649
January 1 <sup>st</sup>	3,237,049		0.42	13,656
<b>2004</b>				
October 1 <sup>st</sup>	3,223,393		0.51	16,440
July 1 <sup>st</sup>	3,206,953		0.39	12,520
April 1 <sup>st</sup>	3,194,433		0.37	11,753
January 1 <sup>st</sup>	3,182,680		0.28	8,957
<b>2003</b>				
October 1 <sup>st</sup>	3,173,723		0.39	12,352
July 1 <sup>st</sup>	3,161,371		0.41	12,905
April 1 <sup>st</sup>	3,148,466		0.34	10,715
January 1 <sup>st</sup>	3,137,751		0.26	8,188
<b>2002</b>				
October 1 <sup>st</sup>	3,129,563		0.42	13,231
July 1 <sup>st</sup>	3,116,332		0.50	15,534
April 1 <sup>st</sup>	3,100,798		0.45	13,774
January 1 <sup>st</sup>	3,087,024		0.38	11,838
<b>2001</b>				
October 1 <sup>st</sup>	3,075,186		0.60	18,447
July 1 <sup>st</sup>	3,056,739		0.50	15,078

1. Population estimates are final postcensal from July 1, 2001 to July 1, 2003, updated postcensal from October 1, 2003 to April 1, 2006 and preliminary postcensal from July 1, 2006.

**Table 2-11**  
**Quarterly population estimates, variations and growth, provincial perspective — British Columbia<sup>1</sup>**

	Population		Quarterly	Quarterly population growth
	number	variation in percentage		number
<b>2007</b>				
January 1 <sup>st</sup>	4,338,106		0.25	10,675
<b>2006</b>				
October 1 <sup>st</sup>	4,327,431		0.39	16,979
July 1 <sup>st</sup>	4,310,452		0.36	15,261
April 1 <sup>st</sup>	4,295,191		0.28	12,180
January 1 <sup>st</sup>	4,283,011		0.19	8,044
<b>2005</b>				
October 1 <sup>st</sup>	4,274,967		0.40	17,134
July 1 <sup>st</sup>	4,257,833		0.39	16,610
April 1 <sup>st</sup>	4,241,223		0.30	12,499
January 1 <sup>st</sup>	4,228,724		0.25	10,591
<b>2004</b>				
October 1 <sup>st</sup>	4,218,133		0.35	14,818
July 1 <sup>st</sup>	4,203,315		0.33	13,921
April 1 <sup>st</sup>	4,189,394		0.24	10,124
January 1 <sup>st</sup>	4,179,270		0.24	10,100
<b>2003</b>				
October 1 <sup>st</sup>	4,169,170		0.33	13,800
July 1 <sup>st</sup>	4,155,370		0.32	13,154
April 1 <sup>st</sup>	4,142,216		0.23	9,551
January 1 <sup>st</sup>	4,132,665		0.14	5,652
<b>2002</b>				
October 1 <sup>st</sup>	4,127,013		0.28	11,600
July 1 <sup>st</sup>	4,115,413		0.23	9,509
April 1 <sup>st</sup>	4,105,904		0.23	9,431
January 1 <sup>st</sup>	4,096,473		0.14	5,814
<b>2001</b>				
October 1 <sup>st</sup>	4,090,659		0.30	12,212
July 1 <sup>st</sup>	4,078,447		0.31	12,449

1. Population estimates are final postcensal from July 1, 2001 to July 1, 2003, updated postcensal from October 1, 2003 to April 1, 2006 and preliminary postcensal from July 1, 2006.



**Table 2-12**  
**Quarterly population estimates, variations and growth, provincial perspective — Yukon Territory <sup>1</sup>**

	Population		Quarterly	Quarterly population growth
	number	variation in percentage		number
<b>2007</b>				
January 1 <sup>st</sup>	31,032		-0.38	-119
<b>2006</b>				
October 1 <sup>st</sup>	31,151		-0.25	-78
July 1 <sup>st</sup>	31,229		0.10	31
April 1 <sup>st</sup>	31,198		-0.25	-79
January 1 <sup>st</sup>	31,277		-0.26	-81
<b>2005</b>				
October 1 <sup>st</sup>	31,358		0.76	237
July 1 <sup>st</sup>	31,121		0.31	95
April 1 <sup>st</sup>	31,026		0.26	79
January 1 <sup>st</sup>	30,947		0.25	78
<b>2004</b>				
October 1 <sup>st</sup>	30,869		-0.09	-27
July 1 <sup>st</sup>	30,896		0.04	11
April 1 <sup>st</sup>	30,885		0.13	39
January 1 <sup>st</sup>	30,846		0.15	46
<b>2003</b>				
October 1 <sup>st</sup>	30,800		0.74	226
July 1 <sup>st</sup>	30,574		0.39	119
April 1 <sup>st</sup>	30,455		0.40	121
January 1 <sup>st</sup>	30,334		0.22	67
<b>2002</b>				
October 1 <sup>st</sup>	30,267		0.43	130
July 1 <sup>st</sup>	30,137		0.15	45
April 1 <sup>st</sup>	30,092		-0.21	-63
January 1 <sup>st</sup>	30,155		0.41	123
<b>2001</b>				
October 1 <sup>st</sup>	30,032		-0.32	-97
July 1 <sup>st</sup>	30,129		0.05	15

1. Population estimates are final postcensal from July 1, 2001 to July 1, 2003, updated postcensal from October 1, 2003 to April 1, 2006 and preliminary postcensal from July 1, 2006.

**Table 2-13**  
**Quarterly population estimates, variations and growth, provincial perspective — Northwest Territories <sup>1</sup>**

	Population		Quarterly	Quarterly population growth
	number	variation in percentage		number
<b>2007</b>				
January 1 <sup>st</sup>	41,777		-0.36	-152
<b>2006</b>				
October 1 <sup>st</sup>	41,929		0.16	68
July 1 <sup>st</sup>	41,861		0.04	16
April 1 <sup>st</sup>	41,845		-0.79	-332
January 1 <sup>st</sup>	42,177		-1.02	-433
<b>2005</b>				
October 1 <sup>st</sup>	42,610		-0.04	-19
July 1 <sup>st</sup>	42,629		-0.40	-171
April 1 <sup>st</sup>	42,800		0.03	13
January 1 <sup>st</sup>	42,787		-0.03	-12
<b>2004</b>				
October 1 <sup>st</sup>	42,799		0.00	1
July 1 <sup>st</sup>	42,798		0.14	58
April 1 <sup>st</sup>	42,740		0.05	22
January 1 <sup>st</sup>	42,718		0.63	269
<b>2003</b>				
October 1 <sup>st</sup>	42,449		0.52	218
July 1 <sup>st</sup>	42,231		0.58	243
April 1 <sup>st</sup>	41,988		0.44	186
January 1 <sup>st</sup>	41,802		0.29	121
<b>2002</b>				
October 1 <sup>st</sup>	41,681		0.46	192
July 1 <sup>st</sup>	41,489		0.61	250
April 1 <sup>st</sup>	41,239		0.32	132
January 1 <sup>st</sup>	41,107		-0.09	-37
<b>2001</b>				
October 1 <sup>st</sup>	41,144		0.79	322
July 1 <sup>st</sup>	40,822		0.45	184

1. Population estimates are final postcensal from July 1, 2001 to July 1, 2003, updated postcensal from October 1, 2003 to April 1, 2006 and preliminary postcensal from July 1, 2006.

**Table 2-14**  
**Quarterly population estimates, variations and growth, provincial perspective — Nunavut<sup>1</sup>**

	Population		Quarterly	Quarterly population growth
	number	variation in percentage		number
<b>2007</b>				
January 1 <sup>st</sup>	30,947		0.31	97
<b>2006</b>				
October 1 <sup>st</sup>	30,850		0.22	68
July 1 <sup>st</sup>	30,782		0.96	292
April 1 <sup>st</sup>	30,490		0.60	181
January 1 <sup>st</sup>	30,309		0.41	123
<b>2005</b>				
October 1 <sup>st</sup>	30,186		0.49	146
July 1 <sup>st</sup>	30,040		0.50	148
April 1 <sup>st</sup>	29,892		0.50	149
January 1 <sup>st</sup>	29,743		0.31	93
<b>2004</b>				
October 1 <sup>st</sup>	29,650		0.06	17
July 1 <sup>st</sup>	29,633		0.86	253
April 1 <sup>st</sup>	29,380		0.18	52
January 1 <sup>st</sup>	29,328		0.44	128
<b>2003</b>				
October 1 <sup>st</sup>	29,200		0.12	35
July 1 <sup>st</sup>	29,165		0.32	92
April 1 <sup>st</sup>	29,073		0.50	146
January 1 <sup>st</sup>	28,927		0.21	60
<b>2002</b>				
October 1 <sup>st</sup>	28,867		0.45	128
July 1 <sup>st</sup>	28,739		1.79	506
April 1 <sup>st</sup>	28,233		0.03	9
January 1 <sup>st</sup>	28,224		0.32	89
<b>2001</b>				
October 1 <sup>st</sup>	28,135		0.05	14
July 1 <sup>st</sup>	28,121		0.68	189

1. Population estimates are final postcensal from July 1, 2001 to July 1, 2003, updated postcensal from October 1, 2003 to April 1, 2006 and preliminary postcensal from July 1, 2006.

**Table 3-1**  
**Quarterly population estimates and factors of growth, provincial perspective — Canada**

	Population at beginning period	Natural increase	Net interprovincial migration	Net international migration	Total net migration	Total growth
	number					
<b>2007</b>						
January - March	32,777,304	..	..	..	..	..
<b>2006</b>						
October - December	32,730,213	24,836	0	22,255	22,255	47,091
July - September	32,623,490	34,729	0	71,994	71,994	106,723
April - June	32,523,898	30,498	0	69,094	69,094	99,592
January - March	32,448,358	22,530	0	53,010	53,010	75,540
<b>2005</b>						
October - December	32,406,497	21,197	0	20,664	20,664	41,861
July - September	32,299,496	34,378	0	72,623	72,623	107,001
April - June	32,197,574	30,311	0	71,611	71,611	101,922
January - March	32,128,983	19,153	0	49,438	49,438	68,591
<b>2004</b>						
October - December	32,089,225	21,533	0	18,225	18,225	39,758
July - September	31,989,454	34,148	0	65,623	65,623	99,771
April - June	31,891,358	29,741	0	68,355	68,355	98,096
January - March	31,818,378	20,450	0	52,530	52,530	72,980
<b>2003</b>						
October - December	31,773,080	22,034	0	23,264	23,264	45,298
July - September	31,676,077	35,445	0	61,558	61,558	97,003
April - June	31,577,688	30,645	0	67,744	67,744	98,389
January - March	31,505,085	20,909	0	51,694	51,694	72,603
<b>2002</b>						
October - December	31,471,094	21,887	0	12,104	12,104	33,991
July - September	31,372,587	33,177	0	65,330	65,330	98,507
April - June	31,265,843	29,589	0	77,155	77,155	106,744
January - March	31,182,448	20,546	0	62,849	62,849	83,395
<b>2001</b>						
October - December	31,135,823	23,562	0	23,063	23,063	46,625
July - September	31,021,251	33,964	0	80,608	80,608	114,572

**Note(s):** See "Data quality, concepts and methodology — Explanatory notes for the tables" section.

**Table 3-2**  
**Quarterly population estimates and factors of growth, provincial perspective — Newfoundland and Labrador**

	Population at beginning period	Natural increase	Net interprovincial migration	Net international migration	Total net migration	Total growth
	number					
<b>2007</b>						
January - March	508,548	..	..	..	..	..
<b>2006</b>						
October - December	508,955	-39	-466	98	-368	-407
July - September	509,677	50	-887	115	-772	-722
April - June	510,431	-74	-872	192	-680	-754
January - March	512,308	-155	-1,829	107	-1,722	-1,877
<b>2005</b>						
October - December	513,539	-8	-1,011	-212	-1,223	-1,231
July - September	513,962	111	-656	122	-534	-423
April - June	514,956	-32	-1,258	296	-962	-994
January - March	516,382	-110	-1,508	192	-1,316	-1,426
<b>2004</b>						
October - December	516,483	35	-49	-87	-136	-101
July - September	517,209	153	-895	16	-879	-726
April - June	517,807	10	-920	312	-608	-598
January - March	518,656	-65	-787	3	-784	-849
<b>2003</b>						
October - December	518,754	109	-252	45	-207	-98
July - September	518,428	226	-68	168	100	326
April - June	518,622	94	-408	120	-288	-194
January - March	519,032	-81	-375	46	-329	-410
<b>2002</b>						
October - December	519,382	38	-309	-79	-388	-350
July - September	519,449	269	-591	255	-336	-67
April - June	519,790	130	-699	228	-471	-341
January - March	521,229	31	-1,588	118	-1,470	-1,439
<b>2001</b>						
October - December	521,455	7	-270	37	-233	-226
July - September	521,986	342	-795	-78	-873	-531

**Note(s):** See "Data quality, concepts and methodology — Explanatory notes for the tables" section.

**Table 3-3**  
**Quarterly population estimates and factors of growth, provincial perspective — Prince Edward Island**

	Population at beginning period	Natural increase	Net interprovincial migration	Net international migration	Total net migration	Total growth
	number					
<b>2007</b>						
January - March	138,632	..	..	..	..	..
<b>2006</b>						
October - December	138,596	10	-74	100	26	36
July - September	138,519	70	-252	259	7	77
April - June	138,306	55	11	147	158	213
January - March	138,165	0	75	66	141	141
<b>2005</b>						
October - December	138,281	31	-167	20	-147	-116
July - September	138,176	76	-46	75	29	105
April - June	137,914	60	104	98	202	262
January - March	137,838	5	33	38	71	76
<b>2004</b>						
October - December	137,822	36	-83	63	-20	16
July - September	137,876	81	-193	58	-135	-54
April - June	137,828	66	-74	56	-18	48
January - March	137,651	9	91	77	168	177
<b>2003</b>						
October - December	137,537	40	96	-22	74	114
July - September	137,325	98	31	83	114	212
April - June	137,152	92	53	28	81	173
January - March	137,088	4	44	16	60	64
<b>2002</b>						
October - December	137,067	6	20	-5	15	21
July - September	136,934	55	48	30	78	133
April - June	136,835	47	10	42	52	99
January - March	136,847	-16	-13	17	4	-12
<b>2001</b>						
October - December	136,872	11	-29	-7	-36	-25
July - September	136,672	66	94	40	134	200

**Note(s):** See "Data quality, concepts and methodology — Explanatory notes for the tables" section.

**Table 3-4**  
**Quarterly population estimates and factors of growth, provincial perspective — Nova Scotia**

	Population at beginning period	Natural increase	Net interprovincial migration	Net international migration	Total net migration	Total growth
	number					
<b>2007</b>						
January - March	933,793	..	..	..	..	..
<b>2006</b>						
October - December	934,172	-140	-548	309	-239	-379
July - September	934,405	169	-1,036	634	-402	-233
April - June	934,281	100	-645	669	24	124
January - March	935,347	-111	-1,335	380	-955	-1,066
<b>2005</b>						
October - December	936,366	-66	-988	35	-953	-1,019
July - September	936,130	248	-962	950	-12	236
April - June	936,602	154	-868	242	-626	-472
January - March	937,782	-52	-1,263	135	-1,128	-1,180
<b>2004</b>						
October - December	938,648	-9	-637	-220	-857	-866
July - September	937,993	302	-273	626	353	655
April - June	937,212	208	-65	638	573	781
January - March	937,484	8	-619	339	-280	-272
<b>2003</b>						
October - December	937,429	-45	91	9	100	55
July - September	936,513	396	-179	699	520	916
April - June	935,601	283	117	512	629	912
January - March	935,404	-48	113	132	245	197
<b>2002</b>						
October - December	935,571	35	95	-297	-202	-167
July - September	934,507	421	185	458	643	1,064
April - June	933,720	128	44	615	659	787
January - March	933,609	82	-580	609	29	111
<b>2001</b>						
October - December	933,245	101	31	232	263	364
July - September	932,389	460	-393	789	396	856

**Note(s):** See "Data quality, concepts and methodology — Explanatory notes for the tables" section.

**Table 3-5**  
**Quarterly population estimates and factors of growth, provincial perspective — New Brunswick**

	Population at beginning period	Natural increase	Net interprovincial migration	Net international migration	Total net migration	Total growth
	number					
<b>2007</b>						
January - March	748,582	..	..	..	..	..
<b>2006</b>						
October - December	748,439	-2	-101	246	145	143
July - September	749,168	216	-1,605	660	-945	-729
April - June	749,920	69	-1,127	306	-821	-752
January - March	750,558	-21	-920	303	-617	-638
<b>2005</b>						
October - December	751,218	-76	-719	135	-584	-660
July - September	751,481	280	-1,022	479	-543	-263
April - June	752,017	121	-800	143	-657	-536
January - March	752,036	33	-289	237	-52	-19
<b>2004</b>						
October - December	752,191	-22	-276	143	-133	-155
July - September	752,080	331	-709	489	-220	111
April - June	751,854	172	-58	112	54	226
January - March	751,419	87	176	172	348	435
<b>2003</b>						
October - December	751,469	95	-279	134	-145	-50
July - September	751,222	393	-599	453	-146	247
April - June	751,014	236	-212	184	-28	208
January - March	750,937	136	-187	128	-59	77
<b>2002</b>						
October - December	750,976	92	-167	36	-131	-39
July - September	750,327	459	-277	467	190	649
April - June	749,618	229	377	103	480	709
January - March	749,286	170	-97	259	162	332
<b>2001</b>						
October - December	749,716	54	-478	-6	-484	-430
July - September	749,890	453	-1,020	393	-627	-174

**Note(s):** See "Data quality, concepts and methodology — Explanatory notes for the tables" section.



**Table 3-6**  
**Quarterly population estimates and factors of growth, provincial perspective — Quebec**

	Population at beginning period	Natural increase	Net interprovincial migration	Net international migration	Total net migration	Total growth
	number					
<b>2007</b>						
January - March	7,676,097	..	..	..	..	..
<b>2006</b>						
October - December	7,669,100	6,400	-2,858	3,455	597	6,997
July - September	7,651,531	8,750	-3,922	12,741	8,819	17,569
April - June	7,635,319	7,200	-3,883	12,895	9,012	16,212
January - March	7,622,887	5,800	-1,956	8,588	6,632	12,432
<b>2005</b>						
October - December	7,616,248	4,650	-1,641	3,630	1,989	6,639
July - September	7,597,768	7,900	-675	11,255	10,580	18,480
April - June	7,582,204	6,450	-2,845	11,959	9,114	15,564
January - March	7,574,048	1,800	-713	7,069	6,356	8,156
<b>2004</b>						
October - December	7,566,694	3,918	-524	3,960	3,436	7,354
July - September	7,548,589	7,379	-881	11,607	10,726	18,105
April - June	7,531,909	5,125	-1,601	13,156	11,555	16,680
January - March	7,521,126	1,950	-291	9,124	8,833	10,783
<b>2003</b>						
October - December	7,513,230	3,920	96	3,880	3,976	7,896
July - September	7,494,690	6,894	974	10,672	11,646	18,540
April - June	7,478,748	5,283	-449	11,108	10,659	15,942
January - March	7,467,705	2,881	-403	8,565	8,162	11,043
<b>2002</b>						
October - December	7,461,823	3,623	-331	2,590	2,259	5,882
July - September	7,445,745	5,590	-646	11,134	10,488	16,078
April - June	7,432,197	5,290	-2,399	10,657	8,258	13,548
January - March	7,421,309	2,439	-852	9,301	8,449	10,888
<b>2001</b>						
October - December	7,413,392	4,042	91	3,784	3,875	7,917
July - September	7,396,990	6,096	-1,190	11,496	10,306	16,402

**Note(s):** See "Data quality, concepts and methodology — Explanatory notes for the tables" section.

**Table 3-7**  
**Quarterly population estimates and factors of growth, provincial perspective — Ontario**

	Population at beginning period	Natural increase	Net interprovincial migration	Net international migration	Total net migration	Total growth
	number					
<b>2007</b>						
January - March	12,726,336	..	..	..	..	..
<b>2006</b>						
October - December	12,721,776	9,558	-10,071	5,073	-4,998	4,560
July - September	12,686,952	12,986	-14,720	36,558	21,838	34,824
April - June	12,643,698	11,946	-4,024	35,332	31,308	43,254
January - March	12,614,181	8,076	-5,041	26,482	21,441	29,517
<b>2005</b>						
October - December	12,606,305	8,648	-6,436	5,664	-772	7,876
July - September	12,558,669	13,555	-5,890	39,971	34,081	47,636
April - June	12,508,380	12,495	-2,377	40,171	37,794	50,289
January - March	12,475,400	8,711	-2,149	26,418	24,269	32,980
<b>2004</b>						
October - December	12,465,403	9,284	-4,010	4,723	713	9,997
July - September	12,416,749	14,083	-2,636	37,207	34,571	48,654
April - June	12,365,076	13,034	-674	39,313	38,639	51,673
January - March	12,327,133	9,325	-902	29,520	28,618	37,943
<b>2003</b>						
October - December	12,311,012	9,806	-2,028	8,343	6,315	16,121
July - September	12,262,560	15,185	-3,331	36,598	33,267	48,452
April - June	12,210,254	12,908	149	39,249	39,398	52,306
January - March	12,170,542	8,821	136	30,755	30,891	39,712
<b>2002</b>						
October - December	12,156,386	9,645	127	4,384	4,511	14,156
July - September	12,102,045	14,472	225	39,644	39,869	54,341
April - June	12,036,968	12,833	1,586	50,658	52,244	65,077
January - March	11,986,887	9,342	3,127	37,612	40,739	50,081
<b>2001</b>						
October - December	11,965,417	10,874	-428	11,024	10,596	21,470
July - September	11,897,647	14,905	1,069	51,796	52,865	67,770

**Note(s):** See "Data quality, concepts and methodology — Explanatory notes for the tables" section.

**Table 3-8**  
**Quarterly population estimates and factors of growth, provincial perspective — Manitoba**

	Population at beginning period	Natural increase	Net interprovincial migration	Net international migration	Total net migration	Total growth
	number					
<b>2007</b>						
January - March	1,180,004	..	..	..	..	..
<b>2006</b>						
October - December	1,178,491	692	-1,059	1,880	821	1,513
July - September	1,177,765	1,267	-3,180	2,639	-541	726
April - June	1,175,948	912	-1,957	2,862	905	1,817
January - March	1,174,653	877	-1,634	2,052	418	1,295
<b>2005</b>						
October - December	1,174,595	577	-2,007	1,488	-519	58
July - September	1,174,148	1,323	-3,037	2,161	-876	447
April - June	1,174,038	933	-3,267	2,444	-823	110
January - March	1,173,307	899	-1,569	1,401	-168	731
<b>2004</b>						
October - December	1,172,512	600	-1,116	1,311	195	795
July - September	1,170,475	1,336	-1,275	1,976	701	2,037
April - June	1,167,937	947	-766	2,357	1,591	2,538
January - March	1,165,524	912	4	1,497	1,501	2,413
<b>2003</b>						
October - December	1,163,571	786	-363	1,530	1,167	1,953
July - September	1,161,896	1,396	-1,440	1,719	279	1,675
April - June	1,159,432	1,037	-731	2,158	1,427	2,464
January - March	1,158,042	854	-628	1,164	536	1,390
<b>2002</b>						
October - December	1,157,140	748	-524	678	154	902
July - September	1,155,584	1,274	-992	1,274	282	1,556
April - June	1,153,533	1,087	-667	1,631	964	2,051
January - March	1,152,079	930	-550	1,074	524	1,454
<b>2001</b>						
October - December	1,151,644	743	-1,072	764	-308	435
July - September	1,151,285	1,266	-2,055	1,148	-907	359

**Note(s):** See "Data quality, concepts and methodology — Explanatory notes for the tables" section.

**Table 3-9**  
**Quarterly population estimates and factors of growth, provincial perspective — Saskatchewan**

	Population at beginning period	Natural increase	Net interprovincial migration	Net international migration	Total net migration	Total growth
	number					
<b>2007</b>						
January - March	987,939	..	..	..	..	..
<b>2006</b>						
October - December	985,859	556	1,086	438	1,524	2,080
July - September	985,386	809	-782	446	-336	473
April - June	985,036	841	-1,100	609	-491	350
January - March	986,786	764	-2,941	427	-2,514	-1,750
<b>2005</b>						
October - December	988,837	305	-2,533	177	-2,356	-2,051
July - September	989,957	871	-2,499	508	-1,991	-1,120
April - June	991,824	856	-3,356	633	-2,723	-1,867
January - March	992,940	778	-2,458	564	-1,894	-1,116
<b>2004</b>						
October - December	994,628	323	-2,080	69	-2,011	-1,688
July - September	994,888	883	-1,621	478	-1,143	-260
April - June	994,903	867	-1,498	616	-882	-15
January - March	994,543	791	-828	397	-431	360
<b>2003</b>						
October - December	994,736	416	-846	237	-609	-193
July - September	994,732	986	-1,349	367	-982	4
April - June	994,667	962	-1,280	383	-897	65
January - March	994,856	667	-1,115	259	-856	-189
<b>2002</b>						
October - December	995,358	389	-966	75	-891	-502
July - September	995,886	896	-1,780	356	-1,424	-528
April - June	996,916	822	-2,208	356	-1,852	-1,030
January - March	998,219	748	-2,477	426	-2,051	-1,303
<b>2001</b>						
October - December	998,926	747	-1,568	114	-1,454	-707
July - September	1,000,134	1,029	-2,567	330	-2,237	-1,208

**Note(s):** See "Data quality, concepts and methodology — Explanatory notes for the tables" section.

**Table 3-10**
**Quarterly population estimates and factors of growth, provincial perspective — Alberta**

	Population at beginning period	Natural increase	Net interprovincial migration	Net international migration	Total net migration	Total growth
	number					
<b>2007</b>						
January - March	3,435,511	..	..	..	..	..
<b>2006</b>						
October - December	3,413,464	5,206	11,813	5,028	16,841	22,047
July - September	3,375,763	6,371	24,535	6,795	31,330	37,701
April - June	3,352,235	5,863	11,363	6,302	17,665	23,528
January - March	3,326,699	5,117	15,573	4,846	20,419	25,536
<b>2005</b>						
October - December	3,301,987	4,664	17,059	2,989	20,048	24,712
July - September	3,277,582	6,035	13,110	5,260	18,370	24,405
April - June	3,254,698	5,778	12,056	5,050	17,106	22,884
January - March	3,237,049	5,075	8,935	3,639	12,574	17,649
<b>2004</b>						
October - December	3,223,393	4,666	6,729	2,261	8,990	13,656
July - September	3,206,953	6,020	6,703	3,717	10,420	16,440
April - June	3,194,433	5,783	2,718	4,019	6,737	12,520
January - March	3,182,680	5,104	3,198	3,451	6,649	11,753
<b>2003</b>						
October - December	3,173,723	4,767	1,685	2,505	4,190	8,957
July - September	3,161,371	6,093	3,005	3,254	6,259	12,352
April - June	3,148,466	5,785	2,981	4,139	7,120	12,905
January - March	3,137,751	5,057	2,583	3,075	5,658	10,715
<b>2002</b>						
October - December	3,129,563	4,697	2,234	1,257	3,491	8,188
July - September	3,116,332	5,813	4,105	3,313	7,418	13,231
April - June	3,100,798	5,382	5,752	4,400	10,152	15,534
January - March	3,087,024	4,565	5,792	3,417	9,209	13,774
<b>2001</b>						
October - December	3,075,186	4,331	5,759	1,748	7,507	11,838
July - September	3,056,739	5,387	8,932	4,128	13,060	18,447

**Note(s):** See "Data quality, concepts and methodology — Explanatory notes for the tables" section.

**Table 3-11**  
**Quarterly population estimates and factors of growth, provincial perspective — British Columbia**

	Population at beginning period	Natural increase	Net interprovincial migration	Net international migration	Total net migration	Total growth
	number					
<b>2007</b>						
January - March	4,338,106	..	..	..	..	..
<b>2006</b>						
October - December	4,327,431	2,255	2,724	5,696	8,420	10,675
July - September	4,310,452	3,703	2,125	11,151	13,276	16,979
April - June	4,295,191	3,275	2,320	9,666	11,986	15,261
January - March	4,283,011	1,815	654	9,711	10,365	12,180
<b>2005</b>						
October - December	4,274,967	2,170	-869	6,743	5,874	8,044
July - September	4,257,833	3,638	1,674	11,822	13,496	17,134
April - June	4,241,223	3,180	2,879	10,551	13,430	16,610
January - March	4,228,724	1,645	1,127	9,727	10,854	12,499
<b>2004</b>						
October - December	4,218,133	2,398	2,138	6,055	8,193	10,591
July - September	4,203,315	3,239	2,070	9,509	11,579	14,818
April - June	4,189,394	3,210	3,049	7,662	10,711	13,921
January - March	4,179,270	1,961	294	7,869	8,163	10,124
<b>2003</b>						
October - December	4,169,170	1,860	1,683	6,557	8,240	10,100
July - September	4,155,370	3,422	2,839	7,539	10,378	13,800
April - June	4,142,216	3,627	-255	9,782	9,527	13,154
January - March	4,132,665	2,267	-212	7,496	7,284	9,551
<b>2002</b>						
October - December	4,127,013	2,330	-180	3,502	3,322	5,652
July - September	4,115,413	3,616	-390	8,374	7,984	11,600
April - June	4,105,904	3,302	-2,182	8,389	6,207	9,509
January - March	4,096,473	1,933	-2,464	9,962	7,498	9,431
<b>2001</b>						
October - December	4,090,659	2,349	-1,960	5,425	3,465	5,814
July - September	4,078,447	3,651	-1,950	10,511	8,561	12,212

**Note(s):** See "Data quality, concepts and methodology — Explanatory notes for the tables" section.

**Table 3-12**  
**Quarterly population estimates and factors of growth, provincial perspective — Yukon Territory**

	Population at beginning period	Natural increase	Net interprovincial migration	Net international migration	Total net migration	Total growth
	number					
<b>2007</b>						
January - March	31,032	..	..	..	..	..
<b>2006</b>						
October - December	31,151	51	-136	-34	-170	-119
July - September	31,229	52	-115	-15	-130	-78
April - June	31,198	60	-99	70	-29	31
January - March	31,277	49	-154	26	-128	-79
<b>2005</b>						
October - December	31,358	54	-127	-8	-135	-81
July - September	31,121	53	186	-2	184	237
April - June	31,026	63	-3	35	32	95
January - March	30,947	51	37	-9	28	79
<b>2004</b>						
October - December	30,869	55	58	-35	23	78
July - September	30,896	54	-39	-42	-81	-27
April - June	30,885	65	-124	70	-54	11
January - March	30,846	53	-51	37	-14	39
<b>2003</b>						
October - December	30,800	49	18	-21	-3	46
July - September	30,574	71	184	-29	155	226
April - June	30,455	45	30	44	74	119
January - March	30,334	37	41	43	84	121
<b>2002</b>						
October - December	30,267	49	39	-21	18	67
July - September	30,137	46	39	45	84	130
April - June	30,092	41	-68	72	4	45
January - March	30,155	56	-125	6	-119	-63
<b>2001</b>						
October - December	30,032	45	117	-39	78	123
July - September	30,129	52	-145	-4	-149	-97

**Note(s):** See "Data quality, concepts and methodology — Explanatory notes for the tables" section.

**Table 3-13**  
**Quarterly population estimates and factors of growth, provincial perspective — Northwest Territories**

	Population at beginning period	Natural increase	Net interprovincial migration	Net international migration	Total net migration	Total growth
	number					
<b>2007</b>						
January - March	41,777	..	..	..	..	..
<b>2006</b>						
October - December	41,929	120	-247	-25	-272	-152
July - September	41,861	117	-65	16	-49	68
April - June	41,845	100	-125	41	-84	16
January - March	42,177	148	-503	23	-480	-332
<b>2005</b>						
October - December	42,610	99	-528	-4	-532	-433
July - September	42,629	125	-171	27	-144	-19
April - June	42,800	106	-274	-3	-277	-171
January - March	42,787	151	-165	27	-138	13
<b>2004</b>						
October - December	42,799	103	-100	-15	-115	-12
July - September	42,798	126	-129	4	-125	1
April - June	42,740	109	-84	33	-51	58
January - March	42,718	152	-169	39	-130	22
<b>2003</b>						
October - December	42,449	99	94	76	170	269
July - September	42,231	132	54	32	86	218
April - June	41,988	130	73	40	113	243
January - March	41,802	138	37	11	48	186
<b>2002</b>						
October - December	41,681	103	26	-8	18	121
July - September	41,489	104	106	-18	88	192
April - June	41,239	135	107	8	115	250
January - March	41,107	124	-26	34	8	132
<b>2001</b>						
October - December	41,144	110	-136	-11	-147	-37
July - September	40,822	118	139	65	204	322

**Note(s):** See "Data quality, concepts and methodology — Explanatory notes for the tables" section.



Table 3-14

## Quarterly population estimates and factors of growth, provincial perspective — Nunavut

	Population at beginning period	Natural increase	Net interprovincial migration	Net international migration	Total net migration	Total growth
	number					
<b>2007</b>						
January - March	30,947	..	..	..	..	..
<b>2006</b>						
October - December	30,850	169	-63	-9	-72	97
July - September	30,782	169	-96	-5	-101	68
April - June	30,490	151	138	3	141	292
January - March	30,309	171	11	-1	10	181
<b>2005</b>						
October - December	30,186	149	-33	7	-26	123
July - September	30,040	163	-12	-5	-17	146
April - June	29,892	147	9	-8	1	148
January - March	29,743	167	-18	0	-18	149
<b>2004</b>						
October - December	29,650	146	-50	-3	-53	93
July - September	29,633	161	-122	-22	-144	17
April - June	29,380	145	97	11	108	253
January - March	29,328	163	-116	5	-111	52
<b>2003</b>						
October - December	29,200	132	5	-9	-4	128
July - September	29,165	153	-121	3	-118	35
April - June	29,073	163	-68	-3	-71	92
January - March	28,927	176	-34	4	-30	146
<b>2002</b>						
October - December	28,867	132	-64	-8	-72	60
July - September	28,739	162	-32	-2	-34	128
April - June	28,233	163	347	-4	343	506
January - March	28,224	142	-147	14	-133	9
<b>2001</b>						
October - December	28,135	148	-57	-2	-59	89
July - September	28,121	139	-119	-6	-125	14

Note(s): See "Data quality, concepts and methodology — Explanatory notes for the tables" section.

**Table 4-1**  
**Quarterly estimates of demographic components, provincial perspective — Canada**

	Natural increase		Interprovincial migration		International migration				
	Births	Deaths	In-migrants	Out-migrants	Immigrants	Emigrants	Returning emigrants	Net temporary emigrants	Net non-permanent residents
	number								
<b>2006</b>									
October - December	85,005	60,169	81,549	81,549	58,278	7,875	3,474	5,791	-25,831
July - September	91,226	56,497	133,080	133,080	70,345	15,204	8,220	8,195	16,828
April - June	88,381	57,883	90,437	90,437	67,895	8,694	5,584	6,077	10,386
January - March	83,935	61,405	77,569	77,569	55,134	6,953	3,227	5,499	7,101
<b>2005</b>									
October - December	81,984	60,787	61,904	61,904	55,384	7,828	3,474	5,791	-24,575
July - September	89,217	54,839	102,936	102,936	75,946	15,076	8,220	8,195	11,728
April - June	87,222	56,911	89,302	89,302	74,471	8,645	5,584	6,083	6,284
January - March	81,945	62,792	60,889	60,889	56,438	6,911	3,227	5,503	2,187
<b>2004</b>									
October - December	81,735	60,202	53,428	53,428	48,092	7,774	3,474	5,796	-19,771
July - September	87,992	53,844	81,925	81,925	65,578	14,919	8,220	8,180	14,924
April - June	85,762	56,021	78,127	78,127	67,242	8,589	5,584	6,090	10,208
January - March	81,583	61,133	56,247	56,247	54,912	6,868	3,227	5,509	6,768
<b>2003</b>									
October - December	81,561	59,527	44,713	44,713	53,588	7,709	3,474	5,796	-20,293
July - September	88,856	53,411	82,293	82,293	63,340	14,745	8,221	8,167	12,909
April - June	85,486	54,841	68,827	68,827	58,864	7,286	6,048	5,779	15,897
January - March	79,299	58,390	59,732	59,732	45,560	5,978	4,191	5,315	13,236
<b>2002</b>									
October - December	79,120	57,233	51,553	51,553	41,843	7,797	3,237	5,965	-19,214
July - September	86,618	53,441	94,787	94,787	52,926	14,952	7,864	8,502	27,994
April - June	83,719	54,130	72,566	72,566	72,719	7,857	5,382	5,774	12,685
January - March	79,345	58,799	62,967	62,967	61,583	5,959	2,627	5,148	9,746
<b>2001</b>									
October - December	78,968	55,406	54,510	54,510	52,132	7,525	3,285	5,670	-19,159
July - September	86,123	52,159	100,447	100,447	69,900	17,587	6,785	8,968	30,478

**Note(s):** See "Data quality, concepts and methodology — Explanatory notes for the tables" section.

**Table 4-2**  
**Quarterly estimates of demographic components, provincial perspective — Newfoundland and Labrador**

	Natural increase		Interprovincial migration		International migration				
	Births	Deaths	In-migrants	Out-migrants	Immigrants	Emigrants	Returning emigrants	Net temporary emigrants	Net non-permanent residents
	number								
<b>2006</b>									
October - December	1,068	1,107	2,289	2,755	155	29	11	24	-15
July - September	1,119	1,069	3,962	4,849	128	55	27	33	48
April - June	1,046	1,120	2,939	3,811	114	31	18	25	116
January - March	1,059	1,214	2,503	4,332	112	25	10	23	33
<b>2005</b>									
October - December	1,105	1,113	1,919	2,930	116	29	11	24	-286
July - September	1,158	1,047	3,183	3,839	108	55	27	33	75
April - June	1,069	1,101	2,457	3,715	125	31	18	25	209
January - March	1,081	1,191	1,800	3,308	147	24	10	23	82
<b>2004</b>									
October - December	1,124	1,089	1,748	1,797	93	29	11	24	-138
July - September	1,177	1,024	2,208	3,103	176	55	27	33	-99
April - June	1,087	1,077	2,365	3,285	159	31	18	26	192
January - March	1,100	1,165	1,908	2,695	151	24	10	23	-111
<b>2003</b>									
October - December	1,177	1,068	1,574	1,826	78	29	11	24	9
July - September	1,234	1,008	2,550	2,618	148	53	27	33	79
April - June	1,153	1,059	2,310	2,718	65	19	27	24	71
January - March	1,065	1,146	1,995	2,370	68	17	18	22	-1
<b>2002</b>									
October - December	1,127	1,089	1,726	2,035	115	22	13	25	-160
July - September	1,251	982	3,167	3,758	66	41	35	35	230
April - June	1,178	1,048	2,357	3,056	117	35	26	24	144
January - March	1,095	1,064	2,056	3,644	109	26	13	22	44
<b>2001</b>									
October - December	1,076	1,069	1,619	1,889	104	33	16	24	-26
July - September	1,287	945	2,752	3,547	92	78	33	37	-88

**Note(s):** See "Data quality, concepts and methodology — Explanatory notes for the tables" section.

**Table 4-3**  
**Quarterly estimates of demographic components, provincial perspective — Prince Edward Island**

	Natural increase		Interprovincial migration		International migration				
	Births	Deaths	In-migrants	Out-migrants	Immigrants	Emigrants	Returning emigrants	Net temporary emigrants	Net non-permanent residents
	number								
<b>2006</b>									
October - December	330	320	572	646	179	29	11	8	-53
July - September	367	297	1,087	1,339	205	55	24	11	96
April - June	364	309	1,016	1,005	126	31	16	7	43
January - March	334	334	974	899	60	24	10	7	27
<b>2005</b>									
October - December	329	298	387	554	59	29	11	8	-13
July - September	366	290	979	1,025	98	55	24	11	19
April - June	363	303	994	890	101	31	16	7	19
January - March	333	328	603	570	72	24	10	7	-13
<b>2004</b>									
October - December	328	292	314	397	86	29	11	8	3
July - September	366	285	626	819	53	53	24	11	45
April - June	363	297	771	845	89	31	16	7	-11
January - March	333	324	543	452	82	24	10	7	16
<b>2003</b>									
October - December	328	288	505	409	50	27	11	8	-48
July - September	379	281	751	720	46	53	24	11	77
April - June	386	294	683	630	34	5	5	7	1
January - March	324	320	587	543	23	4	3	7	1
<b>2002</b>									
October - December	315	309	498	478	25	6	3	8	-19
July - September	349	294	918	870	7	11	7	11	38
April - June	348	301	705	695	44	13	18	7	0
January - March	316	332	602	615	31	10	7	7	-4
<b>2001</b>									
October - December	291	280	441	470	41	13	10	7	-38
July - September	358	292	891	797	29	30	23	12	30

**Note(s):** See "Data quality, concepts and methodology — Explanatory notes for the tables" section.

**Table 4-4**  
**Quarterly estimates of demographic components, provincial perspective — Nova Scotia**

	Natural increase		Interprovincial migration		International migration				
	Births	Deaths	In-migrants	Out-migrants	Immigrants	Emigrants	Returning emigrants	Net temporary emigrants	Net non-permanent residents
	number								
<b>2006</b>									
October - December	2,064	2,204	4,123	4,671	638	159	65	86	-149
July - September	2,219	2,050	7,026	8,062	886	310	155	120	23
April - June	2,148	2,048	4,617	5,262	558	176	105	88	270
January - March	2,111	2,222	3,425	4,760	502	142	61	81	40
<b>2005</b>									
October - December	2,101	2,167	2,793	3,781	459	159	65	86	-244
July - September	2,257	2,009	5,651	6,613	680	307	155	120	542
April - June	2,171	2,017	4,071	4,939	462	176	105	88	-61
January - March	2,133	2,185	3,105	4,368	328	140	61	81	-33
<b>2004</b>									
October - December	2,121	2,130	2,479	3,116	372	158	65	86	-413
July - September	2,275	1,973	5,385	5,658	546	303	155	119	347
April - June	2,188	1,980	4,573	4,638	459	174	105	88	336
January - March	2,150	2,142	2,839	3,458	393	139	61	81	105
<b>2003</b>									
October - December	2,043	2,088	2,532	2,441	390	157	65	86	-203
July - September	2,332	1,936	5,143	5,322	465	299	155	119	497
April - June	2,226	1,943	4,172	4,055	309	156	117	85	327
January - March	2,049	2,097	3,627	3,514	310	128	82	78	-54
<b>2002</b>									
October - December	2,032	1,997	3,127	3,032	322	167	63	88	-427
July - September	2,328	1,907	5,760	5,575	314	320	153	124	435
April - June	2,194	2,066	4,118	4,074	421	160	81	85	358
January - March	2,109	2,027	3,553	4,133	365	121	40	75	400
<b>2001</b>									
October - December	2,084	1,983	3,093	3,062	331	154	49	83	89
July - September	2,306	1,846	5,567	5,960	498	358	102	131	678

**Note(s):** See "Data quality, concepts and methodology — Explanatory notes for the tables" section.

**Table 4-5**  
**Quarterly estimates of demographic components, provincial perspective — New Brunswick**

	Natural increase		Interprovincial migration		International migration				
	Births	Deaths	In-migrants	Out-migrants	Immigrants	Emigrants	Returning emigrants	Net temporary emigrants	Net non-permanent residents
	number								
<b>2006</b>									
October - December	1,590	1,592	2,726	2,827	403	68	56	51	-94
July - September	1,776	1,560	4,475	6,080	464	131	134	72	265
April - June	1,723	1,654	2,967	4,094	457	77	89	53	-110
January - March	1,685	1,706	2,679	3,599	322	61	51	47	38
<b>2005</b>									
October - December	1,621	1,697	1,892	2,611	241	68	56	51	-43
July - September	1,808	1,528	4,578	5,600	367	131	134	72	181
April - June	1,747	1,626	3,192	3,992	306	76	89	53	-123
January - March	1,707	1,674	2,147	2,436	178	61	51	47	116
<b>2004</b>									
October - December	1,642	1,664	1,943	2,219	182	68	55	51	25
July - September	1,828	1,497	3,322	4,031	199	131	134	72	359
April - June	1,765	1,593	3,148	3,206	232	75	89	53	-81
January - March	1,724	1,637	2,529	2,353	182	61	51	47	47
<b>2003</b>									
October - December	1,724	1,629	1,593	1,872	182	68	54	51	17
July - September	1,859	1,466	3,420	4,019	164	129	131	72	359
April - June	1,796	1,560	2,813	3,025	164	61	83	50	48
January - March	1,738	1,602	2,436	2,623	155	49	57	47	12
<b>2002</b>									
October - December	1,680	1,588	2,105	2,272	161	65	44	52	-52
July - September	1,890	1,431	3,879	4,156	168	125	109	73	388
April - June	1,736	1,507	3,183	2,806	211	109	95	50	-44
January - March	1,740	1,570	2,716	2,813	170	83	46	44	170
<b>2001</b>									
October - December	1,637	1,583	1,955	2,433	169	104	58	50	-79
July - September	1,858	1,405	3,856	4,876	218	245	120	79	379

**Note(s):** See "Data quality, concepts and methodology — Explanatory notes for the tables" section.

**Table 4-6**  
**Quarterly estimates of demographic components, provincial perspective — Quebec**

	Natural increase		Interprovincial migration		International migration				
	Births	Deaths	In-migrants	Out-migrants	Immigrants	Emigrants	Returning emigrants	Net temporary emigrants	Net non-permanent residents
	number								
<b>2006</b>									
October - December	20,300	13,900	5,378	8,236	10,197	1,254	566	922	-5,132
July - September	21,700	12,950	9,728	13,650	13,988	2,421	1,339	1,307	1,142
April - June	20,600	13,400	6,748	10,631	11,402	1,385	911	968	2,935
January - March	19,500	13,700	4,916	6,872	9,106	1,107	527	877	939
<b>2005</b>									
October - December	18,000	13,350	4,696	6,337	8,423	1,246	566	922	-3,191
July - September	20,350	12,450	9,267	9,942	13,052	2,401	1,339	1,307	572
April - June	19,950	13,500	6,999	9,844	12,493	1,377	911	970	902
January - March	17,900	16,100	4,077	4,790	9,347	1,101	527	877	-827
<b>2004</b>									
October - December	17,818	13,900	4,875	5,399	9,159	1,238	567	924	-3,604
July - September	19,679	12,300	6,782	7,663	12,418	2,377	1,339	1,304	1,531
April - June	18,825	13,700	7,070	8,671	12,326	1,369	911	971	2,259
January - March	17,750	15,800	4,488	4,779	10,341	1,094	527	878	228
<b>2003</b>									
October - December	17,954	14,034	3,874	3,778	10,016	1,228	568	924	-4,552
July - September	19,835	12,941	8,295	7,321	11,869	2,350	1,340	1,302	1,115
April - June	18,923	13,640	6,081	6,530	10,184	1,113	1,028	922	1,931
January - March	17,193	14,312	5,276	5,679	7,489	913	712	847	2,124
<b>2002</b>									
October - December	17,263	13,640	4,560	4,891	7,846	1,191	550	950	-3,665
July - September	18,894	13,304	8,355	9,001	9,407	2,283	1,336	1,355	4,029
April - June	18,616	13,326	5,717	8,116	10,572	1,264	859	920	1,410
January - March	17,704	15,265	4,563	5,415	9,754	959	420	821	907
<b>2001</b>									
October - December	17,434	13,392	4,827	4,736	8,715	1,211	524	903	-3,341
July - September	18,848	12,752	9,381	10,571	10,038	2,831	1,082	1,429	4,636

**Note(s):** See "Data quality, concepts and methodology — Explanatory notes for the tables" section.

**Table 4-7**  
**Quarterly estimates of demographic components, provincial perspective — Ontario**

	Natural increase		Interprovincial migration		International migration				
	Births	Deaths	In-migrants	Out-migrants	Immigrants	Emigrants	Returning emigrants	Net temporary emigrants	Net non-permanent residents
	number								
<b>2006</b>									
October - December	32,481	22,923	13,808	23,879	29,415	3,401	1,534	2,407	-20,068
July - September	34,551	21,565	23,224	37,944	34,167	6,564	3,624	3,406	8,737
April - June	34,018	22,072	18,847	22,871	34,958	3,754	2,463	2,527	4,192
January - March	32,279	24,203	14,026	19,067	27,373	3,001	1,425	2,287	2,972
<b>2005</b>									
October - December	32,427	23,779	10,439	16,875	30,239	3,380	1,534	2,407	-20,322
July - September	34,446	20,891	20,924	26,814	40,546	6,508	3,624	3,406	5,715
April - June	33,914	21,419	19,339	21,716	40,489	3,732	2,463	2,528	3,479
January - March	32,172	23,461	12,108	14,257	29,266	2,984	1,425	2,288	999
<b>2004</b>									
October - December	32,334	23,050	10,422	14,432	25,301	3,354	1,534	2,408	-16,350
July - September	34,349	20,266	17,623	20,259	34,734	6,441	3,624	3,400	8,690
April - June	33,812	20,778	17,504	18,178	36,347	3,708	2,463	2,532	6,743
January - March	32,062	22,737	12,448	13,350	28,720	2,965	1,425	2,291	4,631
<b>2003</b>									
October - December	32,142	22,336	9,246	11,274	28,639	3,328	1,534	2,408	-16,094
July - September	34,858	19,673	17,988	21,319	34,239	6,366	3,624	3,395	8,496
April - June	33,071	20,163	16,066	15,917	31,869	3,297	2,537	2,403	10,543
January - March	30,858	22,037	13,959	13,823	24,989	2,705	1,759	2,210	8,922
<b>2002</b>									
October - December	31,239	21,594	12,054	11,927	22,532	3,525	1,358	2,479	-13,502
July - September	34,088	19,616	22,157	21,932	30,437	6,764	3,298	3,534	16,207
April - June	32,517	19,684	17,783	16,197	44,525	3,253	2,352	2,400	9,434
January - March	30,688	21,346	16,018	12,891	36,136	2,466	1,150	2,141	4,933
<b>2001</b>									
October - December	31,468	20,594	12,065	12,493	30,033	3,114	1,437	2,356	-14,976
July - September	34,274	19,369	24,217	23,148	42,142	7,281	2,964	3,728	17,699

**Note(s):** See "Data quality, concepts and methodology — Explanatory notes for the tables" section.



**Table 4-8**  
**Quarterly estimates of demographic components, provincial perspective — Manitoba**

	Natural increase		Interprovincial migration		International migration				
	Births	Deaths	In-migrants	Out-migrants	Immigrants	Emigrants	Returning emigrants	Net temporary emigrants	Net non-permanent residents
	number								
<b>2006</b>									
October - December	3,301	2,609	3,705	4,764	2,201	280	135	127	-49
July - September	3,699	2,432	5,575	8,755	3,027	541	318	179	14
April - June	3,469	2,557	3,975	5,932	2,653	309	217	134	435
January - March	3,419	2,542	3,463	5,097	2,159	247	125	120	135
<b>2005</b>									
October - December	3,310	2,733	2,211	4,218	1,580	278	135	127	178
July - September	3,717	2,394	4,566	7,603	2,492	536	318	179	66
April - June	3,461	2,528	3,049	6,316	2,356	307	217	134	312
January - March	3,411	2,512	2,742	4,311	1,668	246	125	120	-26
<b>2004</b>									
October - December	3,297	2,697	2,309	3,425	1,600	277	135	128	-19
July - September	3,695	2,359	4,080	5,355	2,062	530	318	179	305
April - June	3,435	2,488	3,987	4,753	2,234	305	217	134	345
January - March	3,384	2,472	3,251	3,247	1,530	244	125	120	206
<b>2003</b>									
October - December	3,440	2,654	2,220	2,583	1,733	274	135	128	64
July - September	3,722	2,326	3,843	5,283	1,920	524	318	179	184
April - June	3,489	2,452	3,429	4,160	1,803	256	320	126	417
January - March	3,289	2,435	2,976	3,604	1,047	211	222	116	222
<b>2002</b>									
October - December	3,329	2,581	2,580	3,104	1,004	275	172	131	-92
July - September	3,658	2,384	4,722	5,714	1,052	527	417	187	519
April - June	3,472	2,385	3,312	3,979	1,524	251	254	127	231
January - March	3,429	2,499	3,293	3,843	1,035	190	123	112	218
<b>2001</b>									
October - December	3,243	2,500	2,659	3,731	1,100	240	155	125	-126
July - September	3,602	2,336	4,696	6,751	1,166	560	320	197	419

**Note(s):** See "Data quality, concepts and methodology — Explanatory notes for the tables" section.

**Table 4-9**  
**Quarterly estimates of demographic components, provincial perspective — Saskatchewan**

	Natural increase		Interprovincial migration		International migration				
	Births	Deaths	In-migrants	Out-migrants	Immigrants	Emigrants	Returning emigrants	Net temporary emigrants	Net non-permanent residents
	number								
<b>2006</b>									
October - December	2,790	2,234	5,453	4,367	827	106	64	116	-231
July - September	3,034	2,225	7,049	7,831	694	207	150	165	-26
April - June	3,055	2,214	4,613	5,713	701	117	103	122	44
January - March	3,070	2,306	3,498	6,439	479	94	59	110	93
<b>2005</b>									
October - December	2,825	2,520	2,614	5,147	411	106	64	116	-76
July - September	3,081	2,210	5,306	7,805	521	205	150	165	207
April - June	3,058	2,202	3,911	7,267	643	117	103	122	126
January - March	3,067	2,289	2,987	5,445	532	94	59	110	177
<b>2004</b>									
October - December	2,818	2,495	2,412	4,492	450	106	64	116	-223
July - September	3,069	2,186	4,121	5,742	472	202	150	164	222
April - June	3,044	2,177	4,407	5,905	584	116	103	122	167
January - March	3,052	2,261	3,313	4,141	436	93	59	110	105
<b>2003</b>									
October - December	2,877	2,461	2,398	3,244	462	104	64	116	-69
July - September	3,148	2,162	4,433	5,782	412	200	150	163	168
April - June	3,113	2,151	3,804	5,084	415	115	79	116	120
January - March	2,900	2,233	3,294	4,409	379	93	55	106	24
<b>2002</b>									
October - December	2,741	2,352	2,841	3,807	397	123	43	120	-122
July - September	3,040	2,144	5,233	7,013	367	235	102	171	293
April - June	2,991	2,169	3,715	5,923	452	128	74	116	74
January - March	2,989	2,241	3,100	5,577	451	98	36	103	140
<b>2001</b>									
October - December	2,904	2,157	2,876	4,444	361	123	45	114	-55
July - September	3,112	2,083	4,907	7,474	557	287	93	179	146

**Note(s):** See "Data quality, concepts and methodology — Explanatory notes for the tables" section.

**Table 4-10**  
**Quarterly estimates of demographic components, provincial perspective — Alberta**

	Natural increase		Interprovincial migration		International migration				
	Births	Deaths	In-migrants	Out-migrants	Immigrants	Emigrants	Returning emigrants	Net temporary emigrants	Net non-permanent residents
	number								
<b>2006</b>									
October - December	10,515	5,309	28,596	16,783	4,875	1,085	513	664	1,389
July - September	11,441	5,070	47,351	22,816	5,714	2,095	1,212	940	2,904
April - June	10,918	5,055	26,844	15,481	5,385	1,198	824	697	1,988
January - March	10,197	5,080	27,963	12,390	4,727	958	477	631	1,231
<b>2005</b>									
October - December	9,982	5,318	24,997	7,938	4,167	1,078	513	664	51
July - September	10,892	4,857	29,882	16,772	5,590	2,077	1,212	940	1,475
April - June	10,610	4,832	26,321	14,265	5,291	1,190	824	698	823
January - March	9,945	4,870	19,030	10,095	4,356	951	477	632	389
<b>2004</b>									
October - December	9,784	5,118	15,371	8,642	3,274	1,070	513	665	209
July - September	10,717	4,697	21,696	14,993	4,521	2,054	1,212	939	977
April - June	10,461	4,678	17,684	14,966	4,605	1,182	824	698	470
January - March	9,817	4,713	13,869	10,671	4,072	945	477	632	479
<b>2003</b>									
October - December	9,719	4,952	10,715	9,030	3,861	1,060	513	665	-144
July - September	10,638	4,545	18,554	15,549	4,573	2,029	1,213	937	434
April - June	10,312	4,527	16,180	13,199	4,296	848	880	663	474
January - March	9,618	4,561	14,036	11,453	3,105	695	610	610	665
<b>2002</b>									
October - December	9,305	4,608	12,121	9,887	3,130	907	472	684	-754
July - September	10,215	4,402	22,290	18,185	3,090	1,741	1,143	976	1,797
April - June	9,927	4,545	18,584	12,832	4,601	943	824	663	581
January - March	9,244	4,679	16,033	10,241	3,931	715	403	592	390
<b>2001</b>									
October - December	8,815	4,484	15,261	9,502	3,548	904	503	650	-749
July - September	9,616	4,229	25,737	16,805	4,578	2,111	1,038	1,030	1,653

**Note(s):** See "Data quality, concepts and methodology — Explanatory notes for the tables" section.

**Table 4-11**  
**Quarterly estimates of demographic components, provincial perspective — British Columbia**

	Natural increase		Interprovincial migration		International migration				
	Births	Deaths	In-migrants	Out-migrants	Immigrants	Emigrants	Returning emigrants	Net temporary emigrants	Net non-permanent residents
	number								
<b>2006</b>									
October - December	10,118	7,863	13,951	11,227	9,349	1,454	519	1,375	-1,343
July - September	10,872	7,169	21,867	19,742	11,019	2,807	1,227	1,945	3,657
April - June	10,590	7,315	16,203	13,883	11,490	1,604	834	1,443	389
January - March	9,806	7,991	12,903	12,249	10,267	1,284	482	1,305	1,551
<b>2005</b>									
October - December	9,835	7,665	9,378	10,247	9,655	1,445	519	1,375	-611
July - September	10,695	7,057	17,275	15,601	12,446	2,783	1,227	1,945	2,877
April - June	10,429	7,249	17,246	14,367	12,167	1,596	834	1,445	591
January - March	9,721	8,076	11,261	10,134	10,504	1,276	482	1,307	1,324
<b>2004</b>									
October - December	10,022	7,624	10,805	8,667	7,542	1,435	519	1,375	804
July - September	10,393	7,154	14,968	12,898	10,362	2,755	1,227	1,942	2,617
April - June	10,334	7,124	15,207	12,158	10,156	1,586	834	1,446	-296
January - March	9,740	7,779	9,982	9,688	8,965	1,269	482	1,309	1,000
<b>2003</b>									
October - December	9,737	7,877	9,307	7,624	8,135	1,424	519	1,375	702
July - September	10,394	6,972	15,910	13,071	9,463	2,724	1,229	1,939	1,510
April - June	10,552	6,925	12,037	12,292	9,691	1,408	971	1,372	1,900
January - March	9,813	7,546	10,461	10,673	7,954	1,156	673	1,262	1,287
<b>2002</b>									
October - December	9,699	7,369	9,011	9,191	6,297	1,507	519	1,415	-392
July - September	10,470	6,854	16,569	16,959	7,989	2,890	1,262	2,019	4,032
April - June	10,291	6,989	11,579	13,761	10,205	1,690	794	1,371	451
January - March	9,605	7,672	9,822	12,286	9,570	1,282	388	1,223	2,509
<b>2001</b>									
October - December	9,592	7,243	8,811	10,771	7,698	1,619	486	1,346	206
July - September	10,444	6,793	16,947	18,897	10,512	3,785	1,002	2,129	4,911

**Note(s):** See "Data quality, concepts and methodology — Explanatory notes for the tables" section.

**Table 4-12**  
**Quarterly estimates of demographic components, provincial perspective — Yukon Territory**

	Natural increase		Interprovincial migration		International migration				
	Births	Deaths	In-migrants	Out-migrants	Immigrants	Emigrants	Returning emigrants	Net temporary emigrants	Net non-permanent residents
	number								
<b>2006</b>									
October - December	91	40	261	397	14	3	0	5	-40
July - September	83	31	556	671	5	5	5	8	-12
April - June	103	43	376	475	30	4	2	6	48
January - March	86	37	283	437	14	3	0	5	20
<b>2005</b>									
October - December	93	39	258	385	16	3	0	5	-16
July - September	83	30	577	391	16	5	5	8	-10
April - June	103	40	517	520	18	4	2	6	25
January - March	86	35	250	213	13	3	0	5	-14
<b>2004</b>									
October - December	92	37	248	190	12	3	0	5	-39
July - September	83	29	411	450	15	5	5	8	-49
April - June	103	38	363	487	14	4	2	6	64
January - March	87	34	293	344	21	3	0	5	24
<b>2003</b>									
October - December	85	36	208	190	15	3	0	5	-28
July - September	99	28	495	311	8	5	5	8	-29
April - June	81	36	345	315	11	2	1	5	39
January - March	70	33	308	267	21	2	0	5	29
<b>2002</b>									
October - December	82	33	275	236	9	3	0	6	-21
July - September	89	43	471	432	13	5	2	8	43
April - June	76	35	368	436	22	4	4	5	55
January - March	92	36	361	486	5	3	1	4	7
<b>2001</b>									
October - December	90	45	311	194	12	3	2	5	-45
July - September	86	34	308	453	28	7	5	8	-22

**Note(s):** See "Data quality, concepts and methodology — Explanatory notes for the tables" section.

**Table 4-13**  
**Quarterly estimates of demographic components, provincial perspective — Northwest Territories**

	Natural increase		Interprovincial migration		International migration				
	Births	Deaths	In-migrants	Out-migrants	Immigrants	Emigrants	Returning emigrants	Net temporary emigrants	Net non-permanent residents
	number								
<b>2006</b>									
October - December	156	36	452	699	23	4	0	4	-40
July - September	163	46	912	977	46	8	3	6	-19
April - June	157	57	779	904	18	4	1	4	30
January - March	195	47	631	1,134	11	4	0	4	20
<b>2005</b>									
October - December	163	64	225	753	16	4	0	4	-12
July - September	171	46	595	766	28	8	3	6	10
April - June	162	56	770	1,044	20	4	1	4	-16
January - March	199	48	550	715	20	4	0	4	15
<b>2004</b>									
October - December	166	63	418	518	20	4	0	4	-27
July - September	171	45	574	703	19	8	3	6	-4
April - June	163	54	664	748	34	4	1	4	6
January - March	198	46	607	776	16	4	0	4	31
<b>2003</b>									
October - December	160	61	425	331	25	4	0	4	59
July - September	176	44	767	713	30	8	3	6	13
April - June	182	52	678	605	23	4	0	4	25
January - March	183	45	569	532	16	3	0	3	1
<b>2002</b>									
October - December	142	39	491	465	5	3	0	4	-6
July - September	151	47	924	818	15	5	0	6	-22
April - June	177	42	640	533	20	4	1	4	-5
January - March	165	41	669	695	20	3	0	3	20
<b>2001</b>									
October - December	147	37	389	525	18	4	0	4	-21
July - September	162	44	971	832	36	9	3	6	41

**Note(s):** See "Data quality, concepts and methodology — Explanatory notes for the tables" section.

**Table 4-14**  
**Quarterly estimates of demographic components, provincial perspective — Nunavut**

	Natural increase		Interprovincial migration		International migration				
	Births	Deaths	In-migrants	Out-migrants	Immigrants	Emigrants	Returning emigrants	Net temporary emigrants	Net non-permanent residents
	number								
<b>2006</b>									
October - December	201	32	235	298	2	3	0	2	-6
July - September	202	33	268	364	2	5	2	3	-1
April - June	190	39	513	375	3	4	1	3	6
January - March	194	23	305	294	2	3	0	2	2
<b>2005</b>									
October - December	193	44	95	128	2	3	0	2	10
July - September	193	30	153	165	2	5	2	3	-1
April - June	185	38	436	427	0	4	1	3	-2
January - March	190	23	229	247	7	3	0	2	-2
<b>2004</b>									
October - December	189	43	84	134	1	3	0	2	1
July - September	190	29	129	251	1	5	2	3	-17
April - June	182	37	384	287	3	4	1	3	14
January - March	186	23	177	293	3	3	0	2	7
<b>2003</b>									
October - December	175	43	116	111	2	3	0	2	-6
July - September	182	29	144	265	3	5	2	3	6
April - June	202	39	229	297	0	2	0	2	1
January - March	199	23	208	242	4	2	0	2	4
<b>2002</b>									
October - December	166	34	164	228	0	3	0	3	-2
July - September	195	33	342	374	1	5	0	3	5
April - June	196	33	505	158	5	3	0	2	-4
January - March	169	27	181	328	6	3	0	1	12
<b>2001</b>									
October - December	187	39	203	260	2	3	0	3	2
July - September	170	31	217	336	6	5	0	3	-4

**Note(s):** See "Data quality, concepts and methodology — Explanatory notes for the tables" section.

**Table 5-1**  
**Quarterly estimates of demographic components, national perspective — Births <sup>1</sup>**

	Canada	Newfoundland and Labrador	Prince Edward Island	Nova Scotia	New Brunswick	Quebec	Ontario
	number						
<b>2006</b>							
October - December	85,005	1,068	330	2,064	1,590	20,300	32,481
July - September	91,226	1,119	367	2,219	1,776	21,700	34,551
April - June	88,381	1,046	364	2,148	1,723	20,600	34,018
January - March	83,935	1,059	334	2,111	1,685	19,500	32,279
<b>2005</b>							
October - December	81,984	1,105	329	2,101	1,621	18,000	32,427
July - September	89,217	1,158	366	2,257	1,808	20,350	34,446
April - June	87,222	1,069	363	2,171	1,747	19,950	33,914
January - March	81,945	1,081	333	2,133	1,707	17,900	32,172
<b>2004</b>							
October - December	81,735	1,124	328	2,121	1,642	17,818	32,334
July - September	87,992	1,177	366	2,275	1,828	19,679	34,349
April - June	85,762	1,087	363	2,188	1,765	18,825	33,812
January - March	81,583	1,100	333	2,150	1,724	17,750	32,062
<b>2003</b>							
October - December	81,561	1,177	328	2,043	1,724	17,954	32,142
July - September	88,856	1,234	379	2,332	1,859	19,835	34,858
April - June	85,486	1,153	386	2,226	1,796	18,923	33,071
January - March	79,299	1,065	324	2,049	1,738	17,193	30,858
<b>2002</b>							
October - December	79,120	1,127	315	2,032	1,680	17,263	31,239
July - September	86,618	1,251	349	2,328	1,890	18,894	34,088
April - June	83,719	1,178	348	2,194	1,736	18,616	32,517
January - March	79,345	1,095	316	2,109	1,740	17,704	30,688
<b>2001</b>							
October - December	78,968	1,076	291	2,084	1,637	17,434	31,468
July - September	86,123	1,287	358	2,306	1,858	18,848	34,274

See footnotes at the end of the table.



Table 5-1 – continued

 Quarterly estimates of demographic components, national perspective — Births <sup>1</sup>

	Manitoba	Saskatchewan	Alberta	British Columbia	Yukon Territory	Northwest Territories	Nunavut
	number						
<b>2006</b>							
October - December	3,301	2,790	10,515	10,118	91	156	201
July - September	3,699	3,034	11,441	10,872	83	163	202
April - June	3,469	3,055	10,918	10,590	103	157	190
January - March	3,419	3,070	10,197	9,806	86	195	194
<b>2005</b>							
October - December	3,310	2,825	9,982	9,835	93	163	193
July - September	3,717	3,081	10,892	10,695	83	171	193
April - June	3,461	3,058	10,610	10,429	103	162	185
January - March	3,411	3,067	9,945	9,721	86	199	190
<b>2004</b>							
October - December	3,297	2,818	9,784	10,022	92	166	189
July - September	3,695	3,069	10,717	10,393	83	171	190
April - June	3,435	3,044	10,461	10,334	103	163	182
January - March	3,384	3,052	9,817	9,740	87	198	186
<b>2003</b>							
October - December	3,440	2,877	9,719	9,737	85	160	175
July - September	3,722	3,148	10,638	10,394	99	176	182
April - June	3,489	3,113	10,312	10,552	81	182	202
January - March	3,289	2,900	9,618	9,813	70	183	199
<b>2002</b>							
October - December	3,329	2,741	9,305	9,699	82	142	166
July - September	3,658	3,040	10,215	10,470	89	151	195
April - June	3,472	2,991	9,927	10,291	76	177	196
January - March	3,429	2,989	9,244	9,605	92	165	169
<b>2001</b>							
October - December	3,243	2,904	8,815	9,592	90	147	187
July - September	3,602	3,112	9,616	10,444	86	162	170

1. The numbers of births are final up to December 2004, updated from January 2005 to March 2006 and preliminary from April 2006.

**Table 5-2**  
**Quarterly estimates of demographic components, national perspective — Deaths <sup>1</sup>**

	Canada	Newfoundland and Labrador	Prince Edward Island	Nova Scotia	New Brunswick	Quebec	Ontario
	number						
<b>2006</b>							
October - December	60,169	1,107	320	2,204	1,592	13,900	22,923
July - September	56,497	1,069	297	2,050	1,560	12,950	21,565
April - June	57,883	1,120	309	2,048	1,654	13,400	22,072
January - March	61,405	1,214	334	2,222	1,706	13,700	24,203
<b>2005</b>							
October - December	60,787	1,113	298	2,167	1,697	13,350	23,779
July - September	54,839	1,047	290	2,009	1,528	12,450	20,891
April - June	56,911	1,101	303	2,017	1,626	13,500	21,419
January - March	62,792	1,191	328	2,185	1,674	16,100	23,461
<b>2004</b>							
October - December	60,202	1,089	292	2,130	1,664	13,900	23,050
July - September	53,844	1,024	285	1,973	1,497	12,300	20,266
April - June	56,021	1,077	297	1,980	1,593	13,700	20,778
January - March	61,133	1,165	324	2,142	1,637	15,800	22,737
<b>2003</b>							
October - December	59,527	1,068	288	2,088	1,629	14,034	22,336
July - September	53,411	1,008	281	1,936	1,466	12,941	19,673
April - June	54,841	1,059	294	1,943	1,560	13,640	20,163
January - March	58,390	1,146	320	2,097	1,602	14,312	22,037
<b>2002</b>							
October - December	57,233	1,089	309	1,997	1,588	13,640	21,594
July - September	53,441	982	294	1,907	1,431	13,304	19,616
April - June	54,130	1,048	301	2,066	1,507	13,326	19,684
January - March	58,799	1,064	332	2,027	1,570	15,265	21,346
<b>2001</b>							
October - December	55,406	1,069	280	1,983	1,583	13,392	20,594
July - September	52,159	945	292	1,846	1,405	12,752	19,369

See footnotes at the end of the table.

Table 5-2 – continued

 Quarterly estimates of demographic components, national perspective — Deaths <sup>1</sup>

	Manitoba	Saskatchewan	Alberta	British Columbia	Yukon Territory	Northwest Territories	Nunavut
	number						
<b>2006</b>							
October - December	2,609	2,234	5,309	7,863	40	36	32
July - September	2,432	2,225	5,070	7,169	31	46	33
April - June	2,557	2,214	5,055	7,315	43	57	39
January - March	2,542	2,306	5,080	7,991	37	47	23
<b>2005</b>							
October - December	2,733	2,520	5,318	7,665	39	64	44
July - September	2,394	2,210	4,857	7,057	30	46	30
April - June	2,528	2,202	4,832	7,249	40	56	38
January - March	2,512	2,289	4,870	8,076	35	48	23
<b>2004</b>							
October - December	2,697	2,495	5,118	7,624	37	63	43
July - September	2,359	2,186	4,697	7,154	29	45	29
April - June	2,488	2,177	4,678	7,124	38	54	37
January - March	2,472	2,261	4,713	7,779	34	46	23
<b>2003</b>							
October - December	2,654	2,461	4,952	7,877	36	61	43
July - September	2,326	2,162	4,545	6,972	28	44	29
April - June	2,452	2,151	4,527	6,925	36	52	39
January - March	2,435	2,233	4,561	7,546	33	45	23
<b>2002</b>							
October - December	2,581	2,352	4,608	7,369	33	39	34
July - September	2,384	2,144	4,402	6,854	43	47	33
April - June	2,385	2,169	4,545	6,989	35	42	33
January - March	2,499	2,241	4,679	7,672	36	41	27
<b>2001</b>							
October - December	2,500	2,157	4,484	7,243	45	37	39
July - September	2,336	2,083	4,229	6,793	34	44	31

1. The numbers of deaths are final up to December 2003, updated from January 2004 to March 2006 and preliminary from April 2006.

**Table 5-3**  
**Quarterly estimates of demographic components, national perspective — Immigrants <sup>1</sup>**

	Canada	Newfoundland and Labrador	Prince Edward Island	Nova Scotia	New Brunswick	Quebec	Ontario
	number						
<b>2006</b>							
October - December	58,278	155	179	638	403	10,197	29,415
July - September	70,345	128	205	886	464	13,988	34,167
April - June	67,895	114	126	558	457	11,402	34,958
January - March	55,134	112	60	502	322	9,106	27,373
<b>2005</b>							
October - December	55,384	116	59	459	241	8,423	30,239
July - September	75,946	108	98	680	367	13,052	40,546
April - June	74,471	125	101	462	306	12,493	40,489
January - March	56,438	147	72	328	178	9,347	29,266
<b>2004</b>							
October - December	48,092	93	86	372	182	9,159	25,301
July - September	65,578	176	53	546	199	12,418	34,734
April - June	67,242	159	89	459	232	12,326	36,347
January - March	54,912	151	82	393	182	10,341	28,720
<b>2003</b>							
October - December	53,588	78	50	390	182	10,016	28,639
July - September	63,340	148	46	465	164	11,869	34,239
April - June	58,864	65	34	309	164	10,184	31,869
January - March	45,560	68	23	310	155	7,489	24,989
<b>2002</b>							
October - December	41,843	115	25	322	161	7,846	22,532
July - September	52,926	66	7	314	168	9,407	30,437
April - June	72,719	117	44	421	211	10,572	44,525
January - March	61,583	109	31	365	170	9,754	36,136
<b>2001</b>							
October - December	52,132	104	41	331	169	8,715	30,033
July - September	69,900	92	29	498	218	10,038	42,142

See footnotes at the end of the table.

Table 5-3 – continued

 Quarterly estimates of demographic components, national perspective — Immigrants <sup>1</sup>

	Manitoba	Saskatchewan	Alberta	British Columbia	Yukon Territory	Northwest Territories	Nunavut
	number						
<b>2006</b>							
October - December	2,201	827	4,875	9,349	14	23	2
July - September	3,027	694	5,714	11,019	5	46	2
April - June	2,653	701	5,385	11,490	30	18	3
January - March	2,159	479	4,727	10,267	14	11	2
<b>2005</b>							
October - December	1,580	411	4,167	9,655	16	16	2
July - September	2,492	521	5,590	12,446	16	28	2
April - June	2,356	643	5,291	12,167	18	20	0
January - March	1,668	532	4,356	10,504	13	20	7
<b>2004</b>							
October - December	1,600	450	3,274	7,542	12	20	1
July - September	2,062	472	4,521	10,362	15	19	1
April - June	2,234	584	4,605	10,156	14	34	3
January - March	1,530	436	4,072	8,965	21	16	3
<b>2003</b>							
October - December	1,733	462	3,861	8,135	15	25	2
July - September	1,920	412	4,573	9,463	8	30	3
April - June	1,803	415	4,296	9,691	11	23	0
January - March	1,047	379	3,105	7,954	21	16	4
<b>2002</b>							
October - December	1,004	397	3,130	6,297	9	5	0
July - September	1,052	367	3,090	7,989	13	15	1
April - June	1,524	452	4,601	10,205	22	20	5
January - March	1,035	451	3,931	9,570	5	20	6
<b>2001</b>							
October - December	1,100	361	3,548	7,698	12	18	2
July - September	1,166	557	4,578	10,512	28	36	6

1. The numbers of immigrants are final up to December 2004, updated from January 2005 to March 2006 and preliminary from April 2006.

**Table 5-4**  
**Quarterly estimates of demographic components, national perspective — Emigrants <sup>1</sup>**

	Canada	Newfoundland and Labrador	Prince Edward Island	Nova Scotia	New Brunswick	Quebec	Ontario
	number						
<b>2006</b>							
October - December	7,875	29	29	159	68	1,254	3,401
July - September	15,204	55	55	310	131	2,421	6,564
April - June	8,694	31	31	176	77	1,385	3,754
January - March	6,953	25	24	142	61	1,107	3,001
<b>2005</b>							
October - December	7,828	29	29	159	68	1,246	3,380
July - September	15,076	55	55	307	131	2,401	6,508
April - June	8,645	31	31	176	76	1,377	3,732
January - March	6,911	24	24	140	61	1,101	2,984
<b>2004</b>							
October - December	7,774	29	29	158	68	1,238	3,354
July - September	14,919	55	53	303	131	2,377	6,441
April - June	8,589	31	31	174	75	1,369	3,708
January - March	6,868	24	24	139	61	1,094	2,965
<b>2003</b>							
October - December	7,709	29	27	157	68	1,228	3,328
July - September	14,745	53	53	299	129	2,350	6,366
April - June	7,286	19	5	156	61	1,113	3,297
January - March	5,978	17	4	128	49	913	2,705
<b>2002</b>							
October - December	7,797	22	6	167	65	1,191	3,525
July - September	14,952	41	11	320	125	2,283	6,764
April - June	7,857	35	13	160	109	1,264	3,253
January - March	5,959	26	10	121	83	959	2,466
<b>2001</b>							
October - December	7,525	33	13	154	104	1,211	3,114
July - September	17,587	78	30	358	245	2,831	7,281

See footnotes at the end of the table.

Table 5-4 – continued

 Quarterly estimates of demographic components, national perspective — Emigrants <sup>1</sup>

	Manitoba	Saskatchewan	Alberta	British Columbia	Yukon Territory	Northwest Territories	Nunavut
	number						
<b>2006</b>							
October - December	280	106	1,085	1,454	3	4	3
July - September	541	207	2,095	2,807	5	8	5
April - June	309	117	1,198	1,604	4	4	4
January - March	247	94	958	1,284	3	4	3
<b>2005</b>							
October - December	278	106	1,078	1,445	3	4	3
July - September	536	205	2,077	2,783	5	8	5
April - June	307	117	1,190	1,596	4	4	4
January - March	246	94	951	1,276	3	4	3
<b>2004</b>							
October - December	277	106	1,070	1,435	3	4	3
July - September	530	202	2,054	2,755	5	8	5
April - June	305	116	1,182	1,586	4	4	4
January - March	244	93	945	1,269	3	4	3
<b>2003</b>							
October - December	274	104	1,060	1,424	3	4	3
July - September	524	200	2,029	2,724	5	8	5
April - June	256	115	848	1,408	2	4	2
January - March	211	93	695	1,156	2	3	2
<b>2002</b>							
October - December	275	123	907	1,507	3	3	3
July - September	527	235	1,741	2,890	5	5	5
April - June	251	128	943	1,690	4	4	3
January - March	190	98	715	1,282	3	3	3
<b>2001</b>							
October - December	240	123	904	1,619	3	4	3
July - September	560	287	2,111	3,785	7	9	5

1. The numbers of emigrants are final up to June 2003, updated from July 2003 to March 2006 and preliminary from April 2006.

**Table 5-5**  
**Quarterly estimates of demographic components, national perspective — Returning emigrants <sup>1</sup>**

	Canada	Newfoundland and Labrador	Prince Edward Island	Nova Scotia	New Brunswick	Quebec	Ontario
	number						
<b>2006</b>							
October - December	3,474	11	11	65	56	566	1,534
July - September	8,220	27	24	155	134	1,339	3,624
April - June	5,584	18	16	105	89	911	2,463
January - March	3,227	10	10	61	51	527	1,425
<b>2005</b>							
October - December	3,474	11	11	65	56	566	1,534
July - September	8,220	27	24	155	134	1,339	3,624
April - June	5,584	18	16	105	89	911	2,463
January - March	3,227	10	10	61	51	527	1,425
<b>2004</b>							
October - December	3,474	11	11	65	55	567	1,534
July - September	8,220	27	24	155	134	1,339	3,624
April - June	5,584	18	16	105	89	911	2,463
January - March	3,227	10	10	61	51	527	1,425
<b>2003</b>							
October - December	3,474	11	11	65	54	568	1,534
July - September	8,221	27	24	155	131	1,340	3,624
April - June	6,048	27	5	117	83	1,028	2,537
January - March	4,191	18	3	82	57	712	1,759
<b>2002</b>							
October - December	3,237	13	3	63	44	550	1,358
July - September	7,864	35	7	153	109	1,336	3,298
April - June	5,382	26	18	81	95	859	2,352
January - March	2,627	13	7	40	46	420	1,150
<b>2001</b>							
October - December	3,285	16	10	49	58	524	1,437
July - September	6,785	33	23	102	120	1,082	2,964

See footnotes at the end of the table.



Table 5-5 – continued

 Quarterly estimates of demographic components, national perspective — Returning emigrants <sup>1</sup>

	Manitoba	Saskatchewan	Alberta	British Columbia	Yukon Territory	Northwest Territories	Nunavut
	number						
<b>2006</b>							
October - December	135	64	513	519	0	0	0
July - September	318	150	1,212	1,227	5	3	2
April - June	217	103	824	834	2	1	1
January - March	125	59	477	482	0	0	0
<b>2005</b>							
October - December	135	64	513	519	0	0	0
July - September	318	150	1,212	1,227	5	3	2
April - June	217	103	824	834	2	1	1
January - March	125	59	477	482	0	0	0
<b>2004</b>							
October - December	135	64	513	519	0	0	0
July - September	318	150	1,212	1,227	5	3	2
April - June	217	103	824	834	2	1	1
January - March	125	59	477	482	0	0	0
<b>2003</b>							
October - December	135	64	513	519	0	0	0
July - September	318	150	1,213	1,229	5	3	2
April - June	320	79	880	971	1	0	0
January - March	222	55	610	673	0	0	0
<b>2002</b>							
October - December	172	43	472	519	0	0	0
July - September	417	102	1,143	1,262	2	0	0
April - June	254	74	824	794	4	1	0
January - March	123	36	403	388	1	0	0
<b>2001</b>							
October - December	155	45	503	486	2	0	0
July - September	320	93	1,038	1,002	5	3	0

1. The numbers of returning emigrants are final up to June 2003, updated from July 2003 to March 2006 and preliminary from April 2006.

**Table 5-6**  
**Quarterly estimates of demographic components, national perspective — Net temporary emigrants <sup>1</sup>**

	Canada	Newfoundland and Labrador	Prince Edward Island	Nova Scotia	New Brunswick	Quebec	Ontario
	number						
<b>2006</b>							
October - December	5,791	24	8	86	51	922	2,407
July - September	8,195	33	11	120	72	1,307	3,406
April - June	6,077	25	7	88	53	968	2,527
January - March	5,499	23	7	81	47	877	2,287
<b>2005</b>							
October - December	5,791	24	8	86	51	922	2,407
July - September	8,195	33	11	120	72	1,307	3,406
April - June	6,083	25	7	88	53	970	2,528
January - March	5,503	23	7	81	47	877	2,288
<b>2004</b>							
October - December	5,796	24	8	86	51	924	2,408
July - September	8,180	33	11	119	72	1,304	3,400
April - June	6,090	26	7	88	53	971	2,532
January - March	5,509	23	7	81	47	878	2,291
<b>2003</b>							
October - December	5,796	24	8	86	51	924	2,408
July - September	8,167	33	11	119	72	1,302	3,395
April - June	5,779	24	7	85	50	922	2,403
January - March	5,315	22	7	78	47	847	2,210
<b>2002</b>							
October - December	5,965	25	8	88	52	950	2,479
July - September	8,502	35	11	124	73	1,355	3,534
April - June	5,774	24	7	85	50	920	2,400
January - March	5,148	22	7	75	44	821	2,141
<b>2001</b>							
October - December	5,670	24	7	83	50	903	2,356
July - September	8,968	37	12	131	79	1,429	3,728

See footnotes at the end of the table.

Table 5-6 – continued

 Quarterly estimates of demographic components, national perspective — Net temporary emigrants <sup>1</sup>

	Manitoba	Saskatchewan	Alberta	British Columbia	Yukon Territory	Northwest Territories	Nunavut
	number						
<b>2006</b>							
October - December	127	116	664	1,375	5	4	2
July - September	179	165	940	1,945	8	6	3
April - June	134	122	697	1,443	6	4	3
January - March	120	110	631	1,305	5	4	2
<b>2005</b>							
October - December	127	116	664	1,375	5	4	2
July - September	179	165	940	1,945	8	6	3
April - June	134	122	698	1,445	6	4	3
January - March	120	110	632	1,307	5	4	2
<b>2004</b>							
October - December	128	116	665	1,375	5	4	2
July - September	179	164	939	1,942	8	6	3
April - June	134	122	698	1,446	6	4	3
January - March	120	110	632	1,309	5	4	2
<b>2003</b>							
October - December	128	116	665	1,375	5	4	2
July - September	179	163	937	1,939	8	6	3
April - June	126	116	663	1,372	5	4	2
January - March	116	106	610	1,262	5	3	2
<b>2002</b>							
October - December	131	120	684	1,415	6	4	3
July - September	187	171	976	2,019	8	6	3
April - June	127	116	663	1,371	5	4	2
January - March	112	103	592	1,223	4	3	1
<b>2001</b>							
October - December	125	114	650	1,346	5	4	3
July - September	197	179	1,030	2,129	8	6	3

1. The numbers of net temporary emigrants are final up to June 2003, updated from July 2003 to March 2006 and preliminary from April 2006.

**Table 5-7**  
**Quarterly estimates of demographic components, national perspective — Net non-permanent residents <sup>1</sup>**

	Canada	Newfoundland and Labrador	Prince Edward Island	Nova Scotia	New Brunswick	Quebec	Ontario
	number						
<b>2006</b>							
October - December	-25,831	-15	-53	-149	-94	-5,132	-20,068
July - September	16,828	48	96	23	265	1,142	8,737
April - June	10,386	116	43	270	-110	2,935	4,192
January - March	7,101	33	27	40	38	939	2,972
<b>2005</b>							
October - December	-24,575	-286	-13	-244	-43	-3,191	-20,322
July - September	11,728	75	19	542	181	572	5,715
April - June	6,284	209	19	-61	-123	902	3,479
January - March	2,187	82	-13	-33	116	-827	999
<b>2004</b>							
October - December	-19,771	-138	3	-413	25	-3,604	-16,350
July - September	14,924	-99	45	347	359	1,531	8,690
April - June	10,208	192	-11	336	-81	2,259	6,743
January - March	6,768	-111	16	105	47	228	4,631
<b>2003</b>							
October - December	-20,293	9	-48	-203	17	-4,552	-16,094
July - September	12,909	79	77	497	359	1,115	8,496
April - June	15,897	71	1	327	48	1,931	10,543
January - March	13,236	-1	1	-54	12	2,124	8,922
<b>2002</b>							
October - December	-19,214	-160	-19	-427	-52	-3,665	-13,502
July - September	27,994	230	38	435	388	4,029	16,207
April - June	12,685	144	0	358	-44	1,410	9,434
January - March	9,746	44	-4	400	170	907	4,933
<b>2001</b>							
October - December	-19,159	-26	-38	89	-79	-3,341	-14,976
July - September	30,478	-88	30	678	379	4,636	17,699

See footnotes at the end of the table.

Table 5-7 – continued

## Quarterly estimates of demographic components, national perspective — Net non-permanent residents 1

	Manitoba	Saskatchewan	Alberta	British Columbia	Yukon Territory	Northwest Territories	Nunavut
	number						
<b>2006</b>							
October - December	-49	-231	1,389	-1,343	-40	-40	-6
July - September	14	-26	2,904	3,657	-12	-19	-1
April - June	435	44	1,988	389	48	30	6
January - March	135	93	1,231	1,551	20	20	2
<b>2005</b>							
October - December	178	-76	51	-611	-16	-12	10
July - September	66	207	1,475	2,877	-10	10	-1
April - June	312	126	823	591	25	-16	-2
January - March	-26	177	389	1,324	-14	15	-2
<b>2004</b>							
October - December	-19	-223	209	804	-39	-27	1
July - September	305	222	977	2,617	-49	-4	-17
April - June	345	167	470	-296	64	6	14
January - March	206	105	479	1,000	24	31	7
<b>2003</b>							
October - December	64	-69	-144	702	-28	59	-6
July - September	184	168	434	1,510	-29	13	6
April - June	417	120	474	1,900	39	25	1
January - March	222	24	665	1,287	29	1	4
<b>2002</b>							
October - December	-92	-122	-754	-392	-21	-6	-2
July - September	519	293	1,797	4,032	43	-22	5
April - June	231	74	581	451	55	-5	-4
January - March	218	140	390	2,509	7	20	12
<b>2001</b>							
October - December	-126	-55	-749	206	-45	-21	2
July - September	419	146	1,653	4,911	-22	41	-4

1. The numbers of net non-permanent residents are final up to June 2003, updated from July 2003 to March 2006 and preliminary from April 2006.

**Table 5-8**  
**Quarterly estimates of demographic components, national perspective — Interprovincial in-migrants <sup>1</sup>**

	Canada	Newfoundland and Labrador	Prince Edward Island	Nova Scotia	New Brunswick	Quebec	Ontario
	number						
<b>2006</b>							
October - December	81,549	2,289	572	4,123	2,726	5,378	13,808
July - September	133,080	3,962	1,087	7,026	4,475	9,728	23,224
April - June	90,437	2,939	1,016	4,617	2,967	6,748	18,847
January - March	77,569	2,503	974	3,425	2,679	4,916	14,026
<b>2005</b>							
October - December	61,904	1,919	387	2,793	1,892	4,696	10,439
July - September	102,936	3,183	979	5,651	4,578	9,267	20,924
April - June	89,302	2,457	994	4,071	3,192	6,999	19,339
January - March	60,889	1,800	603	3,105	2,147	4,077	12,108
<b>2004</b>							
October - December	53,428	1,748	314	2,479	1,943	4,875	10,422
July - September	81,925	2,208	626	5,385	3,322	6,782	17,623
April - June	78,127	2,365	771	4,573	3,148	7,070	17,504
January - March	56,247	1,908	543	2,839	2,529	4,488	12,448
<b>2003</b>							
October - December	44,713	1,574	505	2,532	1,593	3,874	9,246
July - September	82,293	2,550	751	5,143	3,420	8,295	17,988
April - June	68,827	2,310	683	4,172	2,813	6,081	16,066
January - March	59,732	1,995	587	3,627	2,436	5,276	13,959
<b>2002</b>							
October - December	51,553	1,726	498	3,127	2,105	4,560	12,054
July - September	94,787	3,167	918	5,760	3,879	8,355	22,157
April - June	72,566	2,357	705	4,118	3,183	5,717	17,783
January - March	62,967	2,056	602	3,553	2,716	4,563	16,018
<b>2001</b>							
October - December	54,510	1,619	441	3,093	1,955	4,827	12,065
July - September	100,447	2,752	891	5,567	3,856	9,381	24,217

See footnotes at the end of the table.

Table 5-8 – continued

 Quarterly estimates of demographic components, national perspective — Interprovincial in-migrants <sup>1</sup>

	Manitoba	Saskatchewan	Alberta	British Columbia	Yukon Territory	Northwest Territories	Nunavut
	number						
<b>2006</b>							
October - December	3,705	5,453	28,596	13,951	261	452	235
July - September	5,575	7,049	47,351	21,867	556	912	268
April - June	3,975	4,613	26,844	16,203	376	779	513
January - March	3,463	3,498	27,963	12,903	283	631	305
<b>2005</b>							
October - December	2,211	2,614	24,997	9,378	258	225	95
July - September	4,566	5,306	29,882	17,275	577	595	153
April - June	3,049	3,911	26,321	17,246	517	770	436
January - March	2,742	2,987	19,030	11,261	250	550	229
<b>2004</b>							
October - December	2,309	2,412	15,371	10,805	248	418	84
July - September	4,080	4,121	21,696	14,968	411	574	129
April - June	3,987	4,407	17,684	15,207	363	664	384
January - March	3,251	3,313	13,869	9,982	293	607	177
<b>2003</b>							
October - December	2,220	2,398	10,715	9,307	208	425	116
July - September	3,843	4,433	18,554	15,910	495	767	144
April - June	3,429	3,804	16,180	12,037	345	678	229
January - March	2,976	3,294	14,036	10,461	308	569	208
<b>2002</b>							
October - December	2,580	2,841	12,121	9,011	275	491	164
July - September	4,722	5,233	22,290	16,569	471	924	342
April - June	3,312	3,715	18,584	11,579	368	640	505
January - March	3,293	3,100	16,033	9,822	361	669	181
<b>2001</b>							
October - December	2,659	2,876	15,261	8,811	311	389	203
July - September	4,696	4,907	25,737	16,947	308	971	217

1. The numbers of interprovincial in-migrants are final up to June 2005 and preliminary from July 2005.

**Table 5-9**  
**Quarterly estimates of demographic components, national perspective — Interprovincial out-migrants <sup>1</sup>**

	Canada	Newfoundland and Labrador	Prince Edward Island	Nova Scotia	New Brunswick	Quebec	Ontario
	number						
<b>2006</b>							
October - December	81,549	2,755	646	4,671	2,827	8,236	23,879
July - September	133,080	4,849	1,339	8,062	6,080	13,650	37,944
April - June	90,437	3,811	1,005	5,262	4,094	10,631	22,871
January - March	77,569	4,332	899	4,760	3,599	6,872	19,067
<b>2005</b>							
October - December	61,904	2,930	554	3,781	2,611	6,337	16,875
July - September	102,936	3,839	1,025	6,613	5,600	9,942	26,814
April - June	89,302	3,715	890	4,939	3,992	9,844	21,716
January - March	60,889	3,308	570	4,368	2,436	4,790	14,257
<b>2004</b>							
October - December	53,428	1,797	397	3,116	2,219	5,399	14,432
July - September	81,925	3,103	819	5,658	4,031	7,663	20,259
April - June	78,127	3,285	845	4,638	3,206	8,671	18,178
January - March	56,247	2,695	452	3,458	2,353	4,779	13,350
<b>2003</b>							
October - December	44,713	1,826	409	2,441	1,872	3,778	11,274
July - September	82,293	2,618	720	5,322	4,019	7,321	21,319
April - June	68,827	2,718	630	4,055	3,025	6,530	15,917
January - March	59,732	2,370	543	3,514	2,623	5,679	13,823
<b>2002</b>							
October - December	51,553	2,035	478	3,032	2,272	4,891	11,927
July - September	94,787	3,758	870	5,575	4,156	9,001	21,932
April - June	72,566	3,056	695	4,074	2,806	8,116	16,197
January - March	62,967	3,644	615	4,133	2,813	5,415	12,891
<b>2001</b>							
October - December	54,510	1,889	470	3,062	2,433	4,736	12,493
July - September	100,447	3,547	797	5,960	4,876	10,571	23,148

See footnotes at the end of the table.



Table 5-9 – continued

 Quarterly estimates of demographic components, national perspective — Interprovincial out-migrants <sup>1</sup>

	Manitoba	Saskatchewan	Alberta	British Columbia	Yukon Territory	Northwest Territories	Nunavut
	number						
<b>2006</b>							
October - December	4,764	4,367	16,783	11,227	397	699	298
July - September	8,755	7,831	22,816	19,742	671	977	364
April - June	5,932	5,713	15,481	13,883	475	904	375
January - March	5,097	6,439	12,390	12,249	437	1,134	294
<b>2005</b>							
October - December	4,218	5,147	7,938	10,247	385	753	128
July - September	7,603	7,805	16,772	15,601	391	766	165
April - June	6,316	7,267	14,265	14,367	520	1,044	427
January - March	4,311	5,445	10,095	10,134	213	715	247
<b>2004</b>							
October - December	3,425	4,492	8,642	8,667	190	518	134
July - September	5,355	5,742	14,993	12,898	450	703	251
April - June	4,753	5,905	14,966	12,158	487	748	287
January - March	3,247	4,141	10,671	9,688	344	776	293
<b>2003</b>							
October - December	2,583	3,244	9,030	7,624	190	331	111
July - September	5,283	5,782	15,549	13,071	311	713	265
April - June	4,160	5,084	13,199	12,292	315	605	297
January - March	3,604	4,409	11,453	10,673	267	532	242
<b>2002</b>							
October - December	3,104	3,807	9,887	9,191	236	465	228
July - September	5,714	7,013	18,185	16,959	432	818	374
April - June	3,979	5,923	12,832	13,761	436	533	158
January - March	3,843	5,577	10,241	12,286	486	695	328
<b>2001</b>							
October - December	3,731	4,444	9,502	10,771	194	525	260
July - September	6,751	7,474	16,805	18,897	453	832	336

1. The numbers of interprovincial out-migrants are final up to June 2005 and preliminary from July 2005.

**Table 5-10**  
**Quarterly estimates of demographic components, national perspective — Total growth <sup>1</sup>**

	Canada	Newfoundland and Labrador	Prince Edward Island	Nova Scotia	New Brunswick	Quebec	Ontario
	number						
<b>2006</b>							
October - December	47,091	-407	36	-379	143	6,997	4,560
July - September	106,723	-722	77	-233	-729	17,569	34,824
April - June	99,592	-754	213	124	-752	16,212	43,254
January - March	75,540	-1,877	141	-1,066	-638	12,432	29,517
<b>2005</b>							
October - December	41,861	-1,231	-116	-1,019	-660	6,639	7,876
July - September	107,001	-423	105	236	-263	18,480	47,636
April - June	101,922	-994	262	-472	-536	15,564	50,289
January - March	68,591	-1,426	76	-1,180	-19	8,156	32,980
<b>2004</b>							
October - December	39,758	-101	16	-866	-155	7,354	9,997
July - September	99,771	-726	-54	655	111	18,105	48,654
April - June	98,096	-598	48	781	226	16,680	51,673
January - March	72,980	-849	177	-272	435	10,783	37,943
<b>2003</b>							
October - December	45,298	-98	114	55	-50	7,896	16,121
July - September	97,003	326	212	916	247	18,540	48,452
April - June	98,389	-194	173	912	208	15,942	52,306
January - March	72,603	-410	64	197	77	11,043	39,712
<b>2002</b>							
October - December	33,991	-350	21	-167	-39	5,882	14,156
July - September	98,507	-67	133	1,064	649	16,078	54,341
April - June	106,744	-341	99	787	709	13,548	65,077
January - March	83,395	-1,439	-12	111	332	10,888	50,081
<b>2001</b>							
October - December	46,625	-226	-25	364	-430	7,917	21,470
July - September	114,572	-531	200	856	-174	16,402	67,770

See footnotes at the end of the table.

Table 5-10 – continued

 Quarterly estimates of demographic components, national perspective — Total growth <sup>1</sup>

	Manitoba	Saskatchewan	Alberta	British Columbia	Yukon Territory	Northwest Territories	Nunavut
	number						
<b>2006</b>							
October - December	1,513	2,080	22,047	10,675	-119	-152	97
July - September	726	473	37,701	16,979	-78	68	68
April - June	1,817	350	23,528	15,261	31	16	292
January - March	1,295	-1,750	25,536	12,180	-79	-332	181
<b>2005</b>							
October - December	58	-2,051	24,712	8,044	-81	-433	123
July - September	447	-1,120	24,405	17,134	237	-19	146
April - June	110	-1,867	22,884	16,610	95	-171	148
January - March	731	-1,116	17,649	12,499	79	13	149
<b>2004</b>							
October - December	795	-1,688	13,656	10,591	78	-12	93
July - September	2,037	-260	16,440	14,818	-27	1	17
April - June	2,538	-15	12,520	13,921	11	58	253
January - March	2,413	360	11,753	10,124	39	22	52
<b>2003</b>							
October - December	1,953	-193	8,957	10,100	46	269	128
July - September	1,675	4	12,352	13,800	226	218	35
April - June	2,464	65	12,905	13,154	119	243	92
January - March	1,390	-189	10,715	9,551	121	186	146
<b>2002</b>							
October - December	902	-502	8,188	5,652	67	121	60
July - September	1,556	-528	13,231	11,600	130	192	128
April - June	2,051	-1,030	15,534	9,509	45	250	506
January - March	1,454	-1,303	13,774	9,431	-63	132	9
<b>2001</b>							
October - December	435	-707	11,838	5,814	123	-37	89
July - September	359	-1,208	18,447	12,212	-97	322	14

1. Numbers for total growth are final up to June 2003, updated from July 2003 to March 2006 and preliminary from April 2006.

**Table 5-11**  
**Quarterly estimates of demographic components, national perspective — Natural increase <sup>1</sup>**

	Canada	Newfoundland and Labrador	Prince Edward Island	Nova Scotia	New Brunswick	Quebec	Ontario
	number						
<b>2006</b>							
October - December	24,836	-39	10	-140	-2	6,400	9,558
July - September	34,729	50	70	169	216	8,750	12,986
April - June	30,498	-74	55	100	69	7,200	11,946
January - March	22,530	-155	0	-111	-21	5,800	8,076
<b>2005</b>							
October - December	21,197	-8	31	-66	-76	4,650	8,648
July - September	34,378	111	76	248	280	7,900	13,555
April - June	30,311	-32	60	154	121	6,450	12,495
January - March	19,153	-110	5	-52	33	1,800	8,711
<b>2004</b>							
October - December	21,533	35	36	-9	-22	3,918	9,284
July - September	34,148	153	81	302	331	7,379	14,083
April - June	29,741	10	66	208	172	5,125	13,034
January - March	20,450	-65	9	8	87	1,950	9,325
<b>2003</b>							
October - December	22,034	109	40	-45	95	3,920	9,806
July - September	35,445	226	98	396	393	6,894	15,185
April - June	30,645	94	92	283	236	5,283	12,908
January - March	20,909	-81	4	-48	136	2,881	8,821
<b>2002</b>							
October - December	21,887	38	6	35	92	3,623	9,645
July - September	33,177	269	55	421	459	5,590	14,472
April - June	29,589	130	47	128	229	5,290	12,833
January - March	20,546	31	-16	82	170	2,439	9,342
<b>2001</b>							
October - December	23,562	7	11	101	54	4,042	10,874
July - September	33,964	342	66	460	453	6,096	14,905

See footnotes at the end of the table.

Table 5-11 – continued

 Quarterly estimates of demographic components, national perspective — Natural increase <sup>1</sup>

	Manitoba	Saskatchewan	Alberta	British Columbia	Yukon Territory	Northwest Territories	Nunavut
	number						
<b>2006</b>							
October - December	692	556	5,206	2,255	51	120	169
July - September	1,267	809	6,371	3,703	52	117	169
April - June	912	841	5,863	3,275	60	100	151
January - March	877	764	5,117	1,815	49	148	171
<b>2005</b>							
October - December	577	305	4,664	2,170	54	99	149
July - September	1,323	871	6,035	3,638	53	125	163
April - June	933	856	5,778	3,180	63	106	147
January - March	899	778	5,075	1,645	51	151	167
<b>2004</b>							
October - December	600	323	4,666	2,398	55	103	146
July - September	1,336	883	6,020	3,239	54	126	161
April - June	947	867	5,783	3,210	65	109	145
January - March	912	791	5,104	1,961	53	152	163
<b>2003</b>							
October - December	786	416	4,767	1,860	49	99	132
July - September	1,396	986	6,093	3,422	71	132	153
April - June	1,037	962	5,785	3,627	45	130	163
January - March	854	667	5,057	2,267	37	138	176
<b>2002</b>							
October - December	748	389	4,697	2,330	49	103	132
July - September	1,274	896	5,813	3,616	46	104	162
April - June	1,087	822	5,382	3,302	41	135	163
January - March	930	748	4,565	1,933	56	124	142
<b>2001</b>							
October - December	743	747	4,331	2,349	45	110	148
July - September	1,266	1,029	5,387	3,651	52	118	139

1. Natural increase is final up to December 2003, updated from January 2004 to March 2006 and preliminary from April 2006.

**Table 5-12**  
**Quarterly estimates of demographic components, national perspective — Net interprovincial migration <sup>1</sup>**

	Canada	Newfoundland and Labrador	Prince Edward Island	Nova Scotia	New Brunswick	Quebec	Ontario
	number						
<b>2006</b>							
October - December	0	-466	-74	-548	-101	-2,858	-10,071
July - September	0	-887	-252	-1,036	-1,605	-3,922	-14,720
April - June	0	-872	11	-645	-1,127	-3,883	-4,024
January - March	0	-1,829	75	-1,335	-920	-1,956	-5,041
<b>2005</b>							
October - December	0	-1,011	-167	-988	-719	-1,641	-6,436
July - September	0	-656	-46	-962	-1,022	-675	-5,890
April - June	0	-1,258	104	-868	-800	-2,845	-2,377
January - March	0	-1,508	33	-1,263	-289	-713	-2,149
<b>2004</b>							
October - December	0	-49	-83	-637	-276	-524	-4,010
July - September	0	-895	-193	-273	-709	-881	-2,636
April - June	0	-920	-74	-65	-58	-1,601	-674
January - March	0	-787	91	-619	176	-291	-902
<b>2003</b>							
October - December	0	-252	96	91	-279	96	-2,028
July - September	0	-68	31	-179	-599	974	-3,331
April - June	0	-408	53	117	-212	-449	149
January - March	0	-375	44	113	-187	-403	136
<b>2002</b>							
October - December	0	-309	20	95	-167	-331	127
July - September	0	-591	48	185	-277	-646	225
April - June	0	-699	10	44	377	-2,399	1,586
January - March	0	-1,588	-13	-580	-97	-852	3,127
<b>2001</b>							
October - December	0	-270	-29	31	-478	91	-428
July - September	0	-795	94	-393	-1,020	-1,190	1,069

See footnotes at the end of the table.

Table 5-12 – continued

 Quarterly estimates of demographic components, national perspective — Net interprovincial migration <sup>1</sup>

	Manitoba	Saskatchewan	Alberta	British Columbia	Yukon Territory	Northwest Territories	Nunavut
	number						
<b>2006</b>							
October - December	-1,059	1,086	11,813	2,724	-136	-247	-63
July - September	-3,180	-782	24,535	2,125	-115	-65	-96
April - June	-1,957	-1,100	11,363	2,320	-99	-125	138
January - March	-1,634	-2,941	15,573	654	-154	-503	11
<b>2005</b>							
October - December	-2,007	-2,533	17,059	-869	-127	-528	-33
July - September	-3,037	-2,499	13,110	1,674	186	-171	-12
April - June	-3,267	-3,356	12,056	2,879	-3	-274	9
January - March	-1,569	-2,458	8,935	1,127	37	-165	-18
<b>2004</b>							
October - December	-1,116	-2,080	6,729	2,138	58	-100	-50
July - September	-1,275	-1,621	6,703	2,070	-39	-129	-122
April - June	-766	-1,498	2,718	3,049	-124	-84	97
January - March	4	-828	3,198	294	-51	-169	-116
<b>2003</b>							
October - December	-363	-846	1,685	1,683	18	94	5
July - September	-1,440	-1,349	3,005	2,839	184	54	-121
April - June	-731	-1,280	2,981	-255	30	73	-68
January - March	-628	-1,115	2,583	-212	41	37	-34
<b>2002</b>							
October - December	-524	-966	2,234	-180	39	26	-64
July - September	-992	-1,780	4,105	-390	39	106	-32
April - June	-667	-2,208	5,752	-2,182	-68	107	347
January - March	-550	-2,477	5,792	-2,464	-125	-26	-147
<b>2001</b>							
October - December	-1,072	-1,568	5,759	-1,960	117	-136	-57
July - September	-2,055	-2,567	8,932	-1,950	-145	139	-119

1. Net interprovincial migration numbers are final up to June 2005 and preliminary from July 2005.

**Table 5-13**  
**Quarterly estimates of demographic components, national perspective — Net international migration <sup>1</sup>**

	Canada	Newfoundland and Labrador	Prince Edward Island	Nova Scotia	New Brunswick	Quebec	Ontario
	number						
<b>2006</b>							
October - December	22,255	98	100	309	246	3,455	5,073
July - September	71,994	115	259	634	660	12,741	36,558
April - June	69,094	192	147	669	306	12,895	35,332
January - March	53,010	107	66	380	303	8,588	26,482
<b>2005</b>							
October - December	20,664	-212	20	35	135	3,630	5,664
July - September	72,623	122	75	950	479	11,255	39,971
April - June	71,611	296	98	242	143	11,959	40,171
January - March	49,438	192	38	135	237	7,069	26,418
<b>2004</b>							
October - December	18,225	-87	63	-220	143	3,960	4,723
July - September	65,623	16	58	626	489	11,607	37,207
April - June	68,355	312	56	638	112	13,156	39,313
January - March	52,530	3	77	339	172	9,124	29,520
<b>2003</b>							
October - December	23,264	45	-22	9	134	3,880	8,343
July - September	61,558	168	83	699	453	10,672	36,598
April - June	67,744	120	28	512	184	11,108	39,249
January - March	51,694	46	16	132	128	8,565	30,755
<b>2002</b>							
October - December	12,104	-79	-5	-297	36	2,590	4,384
July - September	65,330	255	30	458	467	11,134	39,644
April - June	77,155	228	42	615	103	10,657	50,658
January - March	62,849	118	17	609	259	9,301	37,612
<b>2001</b>							
October - December	23,063	37	-7	232	-6	3,784	11,024
July - September	80,608	-78	40	789	393	11,496	51,796

See footnotes at the end of the table.



Table 5-13 – continued

 Quarterly estimates of demographic components, national perspective — Net international migration <sup>1</sup>

	Manitoba	Saskatchewan	Alberta	British Columbia	Yukon Territory	Northwest Territories	Nunavut
	number						
<b>2006</b>							
October - December	1,880	438	5,028	5,696	-34	-25	-9
July - September	2,639	446	6,795	11,151	-15	16	-5
April - June	2,862	609	6,302	9,666	70	41	3
January - March	2,052	427	4,846	9,711	26	23	-1
<b>2005</b>							
October - December	1,488	177	2,989	6,743	-8	-4	7
July - September	2,161	508	5,260	11,822	-2	27	-5
April - June	2,444	633	5,050	10,551	35	-3	-8
January - March	1,401	564	3,639	9,727	-9	27	0
<b>2004</b>							
October - December	1,311	69	2,261	6,055	-35	-15	-3
July - September	1,976	478	3,717	9,509	-42	4	-22
April - June	2,357	616	4,019	7,662	70	33	11
January - March	1,497	397	3,451	7,869	37	39	5
<b>2003</b>							
October - December	1,530	237	2,505	6,557	-21	76	-9
July - September	1,719	367	3,254	7,539	-29	32	3
April - June	2,158	383	4,139	9,782	44	40	-3
January - March	1,164	259	3,075	7,496	43	11	4
<b>2002</b>							
October - December	678	75	1,257	3,502	-21	-8	-8
July - September	1,274	356	3,313	8,374	45	-18	-2
April - June	1,631	356	4,400	8,389	72	8	-4
January - March	1,074	426	3,417	9,962	6	34	14
<b>2001</b>							
October - December	764	114	1,748	5,425	-39	-11	-2
July - September	1,148	330	4,128	10,511	-4	65	-6

1. Net international migration numbers are final up to June 2003, updated from July 2003 to March 2006 and preliminary from April 2006.

**Table 5-14**  
**Quarterly estimates of demographic components, national perspective — Total net migration <sup>1</sup>**

	Canada	Newfoundland and Labrador	Prince Edward Island	Nova Scotia	New Brunswick	Quebec	Ontario
	number						
<b>2006</b>							
October - December	22,255	-368	26	-239	145	597	-4,998
July - September	71,994	-772	7	-402	-945	8,819	21,838
April - June	69,094	-680	158	24	-821	9,012	31,308
January - March	53,010	-1,722	141	-955	-617	6,632	21,441
<b>2005</b>							
October - December	20,664	-1,223	-147	-953	-584	1,989	-772
July - September	72,623	-534	29	-12	-543	10,580	34,081
April - June	71,611	-962	202	-626	-657	9,114	37,794
January - March	49,438	-1,316	71	-1,128	-52	6,356	24,269
<b>2004</b>							
October - December	18,225	-136	-20	-857	-133	3,436	713
July - September	65,623	-879	-135	353	-220	10,726	34,571
April - June	68,355	-608	-18	573	54	11,555	38,639
January - March	52,530	-784	168	-280	348	8,833	28,618
<b>2003</b>							
October - December	23,264	-207	74	100	-145	3,976	6,315
July - September	61,558	100	114	520	-146	11,646	33,267
April - June	67,744	-288	81	629	-28	10,659	39,398
January - March	51,694	-329	60	245	-59	8,162	30,891
<b>2002</b>							
October - December	12,104	-388	15	-202	-131	2,259	4,511
July - September	65,330	-336	78	643	190	10,488	39,869
April - June	77,155	-471	52	659	480	8,258	52,244
January - March	62,849	-1,470	4	29	162	8,449	40,739
<b>2001</b>							
October - December	23,063	-233	-36	263	-484	3,875	10,596
July - September	80,608	-873	134	396	-627	10,306	52,865

See footnotes at the end of the table.

Table 5-14 – continued

 Quarterly estimates of demographic components, national perspective — Total net migration <sup>1</sup>

	Manitoba	Saskatchewan	Alberta	British Columbia	Yukon Territory	Northwest Territories	Nunavut
	number						
<b>2006</b>							
October - December	821	1,524	16,841	8,420	-170	-272	-72
July - September	-541	-336	31,330	13,276	-130	-49	-101
April - June	905	-491	17,665	11,986	-29	-84	141
January - March	418	-2,514	20,419	10,365	-128	-480	10
<b>2005</b>							
October - December	-519	-2,356	20,048	5,874	-135	-532	-26
July - September	-876	-1,991	18,370	13,496	184	-144	-17
April - June	-823	-2,723	17,106	13,430	32	-277	1
January - March	-168	-1,894	12,574	10,854	28	-138	-18
<b>2004</b>							
October - December	195	-2,011	8,990	8,193	23	-115	-53
July - September	701	-1,143	10,420	11,579	-81	-125	-144
April - June	1,591	-882	6,737	10,711	-54	-51	108
January - March	1,501	-431	6,649	8,163	-14	-130	-111
<b>2003</b>							
October - December	1,167	-609	4,190	8,240	-3	170	-4
July - September	279	-982	6,259	10,378	155	86	-118
April - June	1,427	-897	7,120	9,527	74	113	-71
January - March	536	-856	5,658	7,284	84	48	-30
<b>2002</b>							
October - December	154	-891	3,491	3,322	18	18	-72
July - September	282	-1,424	7,418	7,984	84	88	-34
April - June	964	-1,852	10,152	6,207	4	115	343
January - March	524	-2,051	9,209	7,498	-119	8	-133
<b>2001</b>							
October - December	-308	-1,454	7,507	3,465	78	-147	-59
July - September	-907	-2,237	13,060	8,561	-149	204	-125

1. Total net migration numbers are final up to June 2003, updated from July 2003 to March 2006 and preliminary from April 2006.

**Table 6**  
**Quarterly estimates of interprovincial migrants by province or territory of origin and destination, Canada, October to December 2006 <sup>P</sup>**

Origin	Destination												
	Newfoundland and Labrador	Prince Edward Island	Nova Scotia	New Brunswick	Quebec	Ontario	Manitoba	Saskatchewan	Alberta	British Columbia	Yukon Territory	Northwest Territories	Nunavut
	number												
Newfoundland and Labrador	.	45	287	127	38	657	57	57	1,236	203	0	26	22
Prince Edward Island	46	.	129	67	9	140	0	8	177	57	3	10	0
Nova Scotia	312	67	.	434	120	1,328	66	51	1,844	336	34	56	23
New Brunswick	48	111	533	.	380	581	8	51	977	129	0	9	0
Quebec	53	25	130	336	.	4,029	67	50	2,445	1,057	0	14	30
Ontario	952	173	1,478	897	3,560	.	1,136	713	10,866	3,995	20	61	28
Manitoba	31	33	37	31	105	1,032	.	776	1,833	834	10	10	32
Saskatchewan	4	0	100	31	25	296	456	.	2,710	734	0	0	11
Alberta	646	82	1,009	545	586	2,973	1,435	2,838	.	6,364	118	166	21
British Columbia	139	36	389	192	512	2,676	387	854	5,942	.	38	39	23
Yukon Territory	17	0	0	9	17	9	0	9	151	177	.	8	0
Northwest Territories	9	0	20	0	0	42	36	46	398	65	38	.	45
Nunavut	32	0	11	57	26	45	57	0	17	0	0	53	.
In-migrants	2,289	572	4,123	2,726	5,378	13,808	3,705	5,453	28,596	13,951	261	452	235
Out-migrants	2,755	646	4,671	2,827	8,236	23,879	4,764	4,367	16,783	11,227	397	699	298
Net	-466	-74	-548	-101	-2,858	-10,071	-1,059	1,086	11,813	2,724	-136	-247	-63
<b>Total number of migrants: 81,549</b>													

<sup>P</sup> Preliminary data.

**Note(s):** Preliminary estimates based on data from the Child Tax Benefit (CTB) Program and Fjk factors calculated using 2002-2003, 2003-2004 and 2004-2005 tax file data from Canada Revenue Agency.

# Quality of estimates

## Post-2001 postcensal population estimates

The postcensal estimates contain certain inaccuracies stemming from:

- (a) errors in the 2001 Census data (the base population on which these estimates were constructed) and
- (b) imperfections in other data sources and the method used to estimate the components.

### Errors in census data

Census data for total population by province or territory are affected by coverage errors. These errors occur when dwellings and/or individuals are missed, incorrectly included or counted more than once. Following each census, Statistics Canada undertakes coverage studies to measure these errors. The main study are the Reverse Record Check Survey (RRC) and the Census Overcoverage Study (COS). Based on these studies, estimates of net undercoverage (which is equal to the difference between undercoverage and overcoverage) are produced. Demography Division adjusts the population enumerated in the census by province and territory using these estimates.

#### Text table 1

#### Estimated net undercoverage of population for Canada, provinces and territories, 1996 and 2001 Censuses

	1996 <sup>1</sup>		2001 <sup>1</sup>	
	Number	Rate in percent	Number	Rate in percent
<b>Canada</b>	<b>712,119</b>	<b>2.41</b>	<b>958,969</b>	<b>3.10</b>
Newfoundland and Labrador	8,840	1.58	9,401	1.80
Prince Edward Island	896	0.66	1,325	0.97
Nova Scotia	21,126	2.27	24,521	2.63
New Brunswick	14,073	1.87	20,095	2.68
Quebec	102,680	1.42	152,880	2.07
Ontario	304,139	2.75	452,309	3.81
Manitoba	19,052	1.68	31,013	2.70
Saskatchewan	28,599	2.81	21,812	2.18
Alberta	71,971	2.60	74,834	2.45
British Columbia	137,446	3.56	164,805	4.05
Yukon Territory	467	1.50	1,423	4.73
Northwest Territories	1,979	4.75	3,295	8.11
Nunavut	851	3.33	1,256	4.49

1. The levels and rates are based on the Reverse Record Check (RRC) and the Overcoverage Study and include non-permanent residents.

The adjustment also incorporates the results of a study on the estimates of the number of people living on incompletely enumerated Indian reserves to complete the corrections for coverage errors in the census. The results of the coverage studies contain mainly sampling errors. For further information regarding the main coverage studies, please see the following document on Statistics Canada's web site: 2001 Census Technical Report on Coverage.

### **Errors coming from methodology and other data sources**

Errors due to estimation methodologies and data sources other than the census are can also be significant.

Since the law requires the recording of vital statistics, births and deaths data meet very high standards. Nevertheless, since preliminary estimates are derived, they can be slightly different from final estimates.

With respect to immigrants and non-permanent residents, Citizenship and Immigration Canada administers special data files on both of these components. Since immigration is controlled by law (the Immigration Act), data on immigrants and non-permanent residents are compiled upon arrival in Canada. These data represent only "legal" immigration and exclude illegal immigrants. Thus, for the "legal" part of international movement into Canada, the data are considered to be of high quality.

However, some biases such as the difference between the stated province of intended residence at the time of arrival and the actual province of residence, may persist. Finally, since information provided by the Visitor Data System from Citizenship and Immigration Canada is not complete (age and sex of dependents, province of residence for certain groups of permit holders), estimates of nonpermanent residents are more prone to error than data on immigrants.

Estimates of the number of emigrants and returning emigrants are both derived using Child Tax Benefit (CTB) data provided by Canada Revenue Agency (CRA). Data are adjusted to take into account the incomplete coverage of the CTB program and to derive the emigration and returning emigration of adults. These adjustments and the delay in obtaining the data are the two main sources of errors.

As current information on the number of persons living temporarily abroad does not exist, estimates are based on the Reverse Record Check (RRC) and the census. Estimates for the intercensal period, distributed equally among the five years, are maintained constant for the postcensal period. Provincial/territorial distributions are obtained from RRC. Moreover, assumptions were made to allow for the distribution of annual to a quarterly level. Any geographical or quarterly variation may introduce error in the estimation of these components.

While preliminary estimates of interprovincial migration are produced using data from the Child Tax Benefit (CTB) program, final estimates are calculated from the annual taxfile received from Canada Revenue Agency (CRA). Since the two estimates of interprovincial migration are produced from different sources of information, they are more subject to error.

### **Quality assessment**

In order to assess the quality of our estimates, two evaluation measures are used : precocity errors and errors of closure.

#### **Precocity errors**

The quality of preliminary estimates of components is analysed using precocity errors. Precocity error, which is calculated on a quarterly basis, is defined as the difference between preliminary and final estimate of a particular component in terms of its relative proportion of the total population for the relevant geographical area. It can be calculated for both population and component estimates.

Precocity error allows for useful comparisons between components, as well as between provinces and territories or geographical areas of different population size. Note that when compared to the total population for an area, the differences between preliminary and final estimates of the components are quite small. There are, however, differences in the amount of impact on the population estimates between components and between provinces and territories.

Generally speaking, net interprovincial migration yields the greatest precocity errors. This is likely the result of the use of different data sources for preliminary and final estimates of interprovincial migration. In most years and for most provinces/territories, births, deaths and immigration estimates yielded the smallest precocity errors. For immigration estimates, this reflects the completeness of the data source and the availability of data for the more

timely preliminary estimates. In the case of births and deaths, small precocity errors support the use of short-term projections for preliminary estimates.

According to the analysis of the most recent precocity errors and assuming that the quality of the basic data remains constant, the present postcensal estimates should have an acceptable degree of reliability.

**Text table 2**  
**Quarterly precocity errors for population and components, Canada, provinces and territories, 2002-2003**

Quarter/Geography	Population	Births	Deaths	Immigration	Emigration	Returning emigration	Net temporary emigration	Net NPR	Interprovincial migration		
									In-migrants	Out-migrants	Net
<b>Rates per thousand</b>											
<b>Canada</b>											
July-September 2002	-0.86	-0.07	0.03	0.00	0.32	-0.04	0.13	-0.28	0.85	0.85	n/d
October-December 2002	-0.64	-0.08	0.08	0.00	0.21	0.00	0.10	-0.16	0.40	0.40	n/d
January-March 2003	-0.41	0.06	0.15	0.00	0.08	-0.03	0.06	-0.15	0.44	0.44	n/d
April-June 2003	-0.38	0.02	0.05	0.00	0.08	-0.02	0.00	-0.26	0.28	0.28	n/d
<b>Newfoundland and Labrador</b>											
July-September 2002	-0.10	-0.10	0.02	0.01	0.18	-0.02	0.06	-0.03	1.29	1.00	0.28
October-December 2002	0.04	-0.10	0.11	0.00	0.10	0.00	0.04	-0.04	1.07	0.63	0.44
January-March 2003	-0.13	0.13	0.38	0.00	0.05	-0.01	0.03	-0.11	1.95	1.62	0.33
April-June 2003	0.66	0.05	0.08	0.02	0.08	0.00	0.00	-0.04	1.30	0.51	0.79
<b>Prince Edward Island</b>											
July-September 2002	2.12	-0.03	-0.10	0.00	0.17	0.20	0.04	-0.01	2.16	0.09	2.07
October-December 2002	0.40	-0.07	0.18	0.01	0.10	0.10	0.02	0.01	0.90	0.24	0.66
January-March 2003	1.93	0.47	0.04	0.00	0.05	0.09	0.01	0.03	1.74	0.30	1.44
April-June 2003	0.60	-0.01	0.16	0.01	0.09	0.07	0.00	-0.01	1.28	0.49	0.79
<b>Nova Scotia</b>											
July-September 2002	-0.63	-0.06	-0.12	0.02	0.01	-0.06	-0.02	0.04	1.00	1.70	-0.69
October-December 2002	-0.66	-0.02	0.21	-0.01	0.02	-0.02	-0.01	-0.01	-0.02	0.36	-0.38
January-March 2003	-0.39	0.17	0.26	0.01	-0.02	-0.04	-0.02	-0.03	0.38	0.65	-0.28
April-June 2003	-0.29	0.05	0.25	0.00	0.06	-0.02	0.00	-0.07	0.36	0.29	0.07
<b>New Brunswick</b>											
July-September 2002	-0.89	-0.06	0.01	0.00	0.13	0.03	0.02	-0.03	1.29	1.98	-0.69
October-December 2002	-0.30	-0.15	0.08	0.00	0.08	0.03	0.01	-0.01	0.41	0.40	0.01
January-March 2003	-0.25	0.08	0.33	0.00	0.03	0.01	0.00	0.05	0.64	0.66	-0.02
April-June 2003	-0.15	0.06	0.11	0.01	0.10	-0.04	0.00	-0.06	0.57	0.49	0.08
<b>Quebec</b>											
July-September 2002	-0.95	0.00	0.02	0.00	0.29	-0.04	0.12	-0.19	0.31	0.60	-0.29
October-December 2002	-0.33	-0.03	0.01	0.00	0.18	-0.01	0.09	-0.11	0.17	0.08	0.09
January-March 2003	-0.37	0.01	0.04	0.00	0.08	-0.03	0.06	-0.09	0.06	0.14	-0.07
April-June 2003	-0.22	-0.01	-0.04	0.00	0.07	-0.01	0.00	-0.17	0.14	0.13	0.00
<b>Ontario</b>											
July-September 2002	-1.14	-0.10	0.06	0.00	0.44	-0.04	0.19	-0.46	0.62	0.47	0.15
October-December 2002	-1.11	-0.14	0.13	0.00	0.28	0.00	0.14	-0.30	0.18	0.30	-0.13
January-March 2003	-0.60	0.12	0.23	0.00	0.12	-0.03	0.10	-0.29	0.25	0.22	0.03
April-June 2003	-0.59	0.09	0.12	0.01	0.06	-0.02	0.00	-0.44	0.14	0.19	-0.05
<b>Manitoba</b>											
July-September 2002	-1.86	-0.08	0.00	0.01	0.20	-0.16	0.13	-0.07	1.28	2.51	-1.23
October-December 2002	-0.51	-0.18	0.08	-0.01	0.13	-0.05	0.10	-0.02	0.95	0.89	0.05
January-March 2003	0.66	0.15	0.29	0.01	0.04	-0.10	0.07	0.01	1.68	0.69	0.99
April-June 2003	0.34	0.13	-0.01	0.00	0.06	-0.01	0.00	-0.10	0.83	0.46	0.37
<b>Saskatchewan</b>											
July-September 2002	-1.28	-0.03	0.13	0.01	0.13	0.00	0.08	-0.04	1.45	2.32	-0.87
October-December 2002	-0.28	-0.05	0.02	0.00	0.09	0.01	0.07	-0.04	0.85	0.88	-0.02
January-March 2003	-1.28	0.16	0.27	0.00	0.03	-0.01	0.04	0.03	0.77	1.89	-1.13
April-June 2003	0.00	0.01	0.08	0.00	0.13	0.03	0.00	-0.05	0.92	0.69	0.23
<b>Alberta</b>											
July-September 2002	0.25	-0.24	-0.01	0.01	0.50	-0.02	0.19	-0.24	2.40	0.98	1.41
October-December 2002	-0.47	-0.11	0.17	0.00	0.31	0.02	0.14	-0.07	1.24	0.93	0.31
January-March 2003	0.34	-0.07	0.14	-0.01	0.14	-0.03	0.09	-0.06	1.50	0.63	0.87
April-June 2003	-0.42	-0.10	0.06	-0.01	0.15	-0.03	0.00	-0.09	0.59	0.57	0.02
<b>British Columbia</b>											
July-September 2002	-0.44	-0.01	-0.03	0.01	0.09	-0.04	0.00	-0.19	0.88	1.03	-0.15
October-December 2002	-0.22	-0.01	-0.02	-0.01	0.08	0.00	0.01	-0.10	0.53	0.56	-0.03
January-March 2003	-0.68	-0.01	-0.02	0.00	-0.01	-0.04	-0.02	-0.07	0.13	0.75	-0.61
April-June 2003	-0.57	-0.05	-0.06	-0.04	0.08	-0.06	0.00	-0.19	0.16	0.37	-0.21
<b>Yukon Territory</b>											
July-September 2002	-8.79	0.27	-0.40	-0.07	0.60	0.20	0.66	-1.00	-4.55	2.79	-7.33
October-December 2002	-0.50	-0.30	0.33	0.00	0.33	0.10	0.50	-0.10	2.02	1.06	0.96
January-March 2003	-1.12	0.33	0.36	0.03	0.20	0.13	0.40	-0.16	2.41	2.90	-0.49
April-June 2003	4.33	0.03	-0.16	0.07	0.10	0.10	-0.03	-0.36	4.30	-0.10	4.40
<b>Northwest Territories</b>											
July-September 2002	-4.15	0.77	0.27	0.07	0.00	0.10	0.77	-0.17	0.07	3.95	-3.88
October-December 2002	-3.72	0.53	0.00	0.00	0.00	0.07	0.55	-0.19	-0.10	3.48	-3.57
January-March 2003	-5.36	-0.67	-0.12	0.00	0.00	0.05	0.43	0.02	1.44	5.88	-4.45
April-June 2003	-2.14	-0.60	-0.33	0.00	0.05	0.07	0.00	-0.24	-1.26	0.40	-1.67
<b>Nunavut</b>											
July-September 2002	-1.64	-0.35	-0.17	0.00	-0.07	0.00	0.70	0.03	-0.35	0.52	-0.87
October-December 2002	3.43	0.76	0.10	0.07	-0.03	0.00	0.48	0.00	3.15	0.00	3.15
January-March 2003	-0.24	-0.10	0.14	0.00	-0.07	0.00	0.38	0.00	5.19	4.87	0.31
April-June 2003	1.86	-0.76	-0.45	0.00	0.03	0.00	0.00	0.00	3.82	1.62	2.20



## Errors of closure

The error of closure measures the exactness level of the final postcensal estimates. It can be defined as the difference between the enumerated population of the most recent census (after adjustments for net undercoverage) and the most current postcensal population estimates as of census day.

The error of closure comes from two sources: differences in the amount of net undercoverage and errors in the components of population change over the intercensal period. This can be calculated for population estimates and for age, sex and marital status. With each 5-year intercensal period, the error of closure can only be calculated with the release of census data and estimates of net undercoverage.

By dividing the error of closure by the adjusted census population rates are relatively small at the national level (0.38% for 1996 and 0.15% for 2001). At the provincial and territorial level, differences are understandably larger, since the estimates are also affected by errors in estimating interprovincial migration. Nevertheless, the provincial/territorial final postcensal estimates generally fall within 1% of the adjusted census population.

### Text table 3

#### Error of closure of the estimates of total population for Canada, provinces and territories, July 1, 1996 and 2001

	1996		2001	
	Number	Rate in percent	Number	Rate in percent
Canada	113,416	0.38	46,467	0.15
Newfoundland and Labrador	8,840	1.58	11,416	2.19
Prince Edward Island	411	0.30	1,481	1.08
Nova Scotia	6,446	0.69	9,034	0.97
New Brunswick	5,634	0.75	4,638	0.62
Quebec	96,449	1.33	-320	0.00
Ontario	56,479	0.51	8,857	0.07
Manitoba	-852	-0.08	-1,121	-0.10
Saskatchewan	-7,400	-0.73	15,952	1.59
Alberta	-8,124	-0.29	714	0.02
British Columbia	-43,313	-1.12	-4,357	-0.11
Yukon Territory	-244	-0.78	-354	-1.18
Northwest Territories	-42	-0.10	481	1.18
Nunavut	-868	-3.39	46	0.16

**Note(s):** The error of closure is equal to the July 1 postcensal estimate minus the census count adjusted to July 1 and for net census undercoverage. The percentage is: error of closure, divided by the census count adjusted to July 1 and for net census undercoverage, multiplied by 100.

## Explanatory notes for the tables

---

**Table 3**

**Quarterly population estimates and aggregated demographic components**

Population	Population estimates are final postcensal from July 1, 2001 to July 1, 2003, updated postcensal from October 1, 2003 to April 1, 2006 and preliminary postcensal from July 1, 2006.
Natural increase	Natural increase is final up to December 2003, updated from January 2004 to March 2006 and preliminary from April 2006.
Interprovincial migration	Net interprovincial migration numbers are final up to June 2005 and preliminary from July 2005.
International migration	Net international migration numbers are final up to June 2003, updated from July 2003 to March 2006 and preliminary from April 2006.
Total migration	Total net migration numbers are final up to June 2003, updated from July 2003 to March 2006 and preliminary from April 2006
Total growth	Numbers for total growth are final up to June 2003, updated from July 2003 to March 2006 and preliminary from April 2006

**Table 4**

**Quarterly estimates of demographic components**

Births	The numbers of births are final up to December 2004, updated from January 2005 to March 2006 and preliminary from April 2006.
Deaths	The numbers of deaths are final up to December 2003, updated from January 2004 to March 2006 and preliminary from April 2006.
In-migrants	The numbers of interprovincial in-migrants are final up to June 2005 and preliminary from July 2005.
Out-migrants	The numbers of interprovincial out-migrants are final up to June 2005 and preliminary from July 2005.
Immigrants	The numbers of immigrants are final up to December 2004, updated from January 2005 to March 2006 and preliminary from April 2006.
Emigrants	The numbers of emigrants are final up to June 2003, updated from July 2003 to March 2006 and preliminary from April 2006.
Returning emigrants	The numbers of returning emigrants are final up to June 2003, updated from July 2003 to March 2006 and preliminary from April 2006.

Net temporary emigrants

The numbers of net temporary emigrants are final up to June 2003, updated from July 2003 to March 2006 and preliminary from April 2006.

Net non-permanent residents

The numbers of net non-permanent residents are final up to June 2003, updated from July 2003 to March 2006 and preliminary from April 2006.

# Appendix I

---

## Glossary

### Annualized rate

Refers to the ratio of the estimated number of events converted to an annual basis divided by the average quarterly populations. In this respect, birth, death, immigration rates, etc are calculated. Generally, the rate is expressed in per 1,000.

### Census coverage

**Net undercoverage:** Difference between undercoverage and overcoverage.

**Overcoverage:** Number of persons who should not have been counted in the census or who were counted more than once.

**Undercoverage:** Number of persons who were intended to have been enumerated in a census but were not enumerated.

### Components of demographic growth

Any of the classes of events generating population movement variations. Births, deaths and migrations are the components responsible for the variation since they alter the total population.

### Emigrants

Canadian citizen or **immigrant** who has left Canada to establish a permanent residence in another country.

### Error of closure

Difference between the **postcensal estimate** for the same date as the census and the results of the census adjusted for **net undercoverage**.

### Immigrant

Within the framework of this publication, the term immigrant refers to **landed immigrant**. A landed immigrant is a person who does not have Canadian citizenship but was granted the right by immigration authorities to live in Canada on a permanent basis.

### International migration

International migration represents movement of population between Canada and a foreign country which involves a change in the usual place of residence. A distinction is made with regard to **immigrants, emigrants, returning emigrants, net temporary emigrants** and **net non-permanent residents**.

### Interprovincial migration

Interprovincial migration represents movement from one province or territory involving a permanent change in residence. A person who takes up residence in another province or territory is an **out-migrant** with reference to the province or territory of origin and an **in-migrant** with reference to the province or territory of destination.

### Natural increase

Variation in population size over a given period as a result of the difference between the numbers of births and deaths.

### Net international migration

Net international migration is obtained according to the following formula: **Immigrants + returning emigrants + net non permanent residents – (emigrants + net temporary emigrants)**

### Net interprovincial migration

Net interprovincial migration represents the difference between **in-migrants** and **out-migrants** for a given province or territory.

### Net non-permanent residents

Net non-permanent residents represent the variation in the number of non-permanent residents between two dates.

### Non-permanent residents

A non permanent resident belongs to one of the five following groups:

- persons residing in Canada claiming refugee status;
- persons residing in Canada who hold a study permit;
- persons residing in Canada who hold a work permit;
- persons residing in Canada who hold a minister's permit;
- all non-Canadian born dependants of persons claiming refugee status, or of persons holding study permits, work permits or minister's permits and living in Canada.

### Net temporary emigration

Net temporary emigration represents the variation in the number of temporary emigrants between two dates. Temporary emigration includes Canadian citizens and **immigrants** living temporarily abroad who have not maintained a usual place of residence in Canada.

### Population

Estimated population and population according to the census are both defined as being the number of Canadians whose usual place of residence is in that area, regardless of where they happened to be on Census Day. Also included are any Canadians staying in a dwelling in that area on Census Day and having no usual place of residence elsewhere in Canada, as well as those considered **non-permanent residents**.

### Population estimate

- (a) **postcensal**: Population estimate produced by using data from the most recent available census adjusted for **net undercoverage** and estimate of the **components of demographic growth** since that last census. This estimate can be preliminary, updated or final.
- (b) **intercensal**: Population estimate derived by using **postcensal estimates** and data adjusted for **net undercoverage** of censuses preceding and following the year in question.

### Population growth or total growth

Variation of population size between two dates. It can also be obtained by summing the **natural increase**, **total net migration** and if possible, **residual deviation**. It can be positive or negative.

### Residual deviation

Difference between demographic **population growth** calculated using **intercensal estimates** of population between two dates and that obtained by the sum of the components for the same period. This deviation results from the distribution of the **error of closure** between years within the quinquennial period.

### Returning emigrants

Canadian citizen or **immigrant** having previously emigrated from Canada and subsequently returned to the country.

### Total net migration

Sum of **net international** and **net interprovincial** migration.

### Vital events

Includes all the demographic events (that is to say births, deaths, marriages and divorces) for which there exists a legal requirement to inform the Provincial or Territorial Registrar's Office.

## Appendix II

---

### Source and remarks

#### Base population

May 15, 2001 Census of Population, adjusted to July 1 and for net undercount.

Statistics Canada, **Census of Canada, 2001**, Catalogue no. 93-360-X.

#### Births and deaths

Statistics Canada, Health Statistics Division.

Statistics Canada, Demography Division, Catalogue no. 91-002-X, Quarterly, Analytical table 5.

#### Immigration

Citizenship and Immigration Canada

#### Emigrants

Statistics Canada, Demography Division - from data on emigrant children from the Child Tax Benefit program (CTB) from Canada Revenue Agency files - CRA and data from the "U.S.Department of Homeland Security, Office of Immigration Statistics"

#### Returning emigrants

Statistics Canada, Demography Division – based on data from the CTB program and adjustment factors calculated using CRA files.

#### Net temporary emigrants

Statistics Canada, Demography Division – based on data from the Reverse Record Check (RRC), 1996 and 2001 Censuses of Canada.

#### Non-permanent residents

Statistics Canada, Demography Division – based on data provided by Citizenship and Immigration Canada.

#### Interprovincial migration

Statistics Canada, Demography Division – based on the CTB program and adjustment factors calculated using CRA files.